



[Go to Product page](#)

Datasheet for ABIN6739152
anti-RALYL antibody (C-Term)

1 Image

Overview

Quantity:	100 µL
Target:	RALYL
Binding Specificity:	C-Term
Reactivity:	Human, Mouse, Cow, Guinea Pig, Pig, Rabbit, Bat, Monkey
Host:	Rabbit
Clonality:	Polyclonal
Conjugate:	This RALYL antibody is un-conjugated
Application:	Western Blotting (WB)

Product Details

Immunogen:	Synthetic peptide from C-Terminus of human RALYL (Q86SE5, NP_776247). Percent identity by BLAST analysis: Human, Chimpanzee, Gorilla, Gibbon, Galago, Marmoset, Elephant, Bovine, Bat, Rabbit, Pig (100%), Horse, Platypus (92%), Guinea pig (85%), Zebra finch (84%), Opossum (81%), Mouse (78%). Type of Immunogen: Synthetic peptide
Isotype:	IgG
Specificity:	Human RALYL
Predicted Reactivity:	Percent identity by BLAST analysis: Human, Pig (100%) Bovine, Rabbit, Horse (92%) Guinea pig (85%).
Purification:	Immunoaffinity purified

Target Details

Target:	RALYL
Alternative Name:	RALYL (RALYL Products)
Background:	Name/Gene ID: RALYL Synonyms: RALYL, HnRNP core protein C-like 3, RNA-binding Raly-like protein, HNRPCL3, HRALYL, RALY RNA binding protein-like
Gene ID:	138046
NCBI Accession:	NP_776247
UniProt:	Q86SE5

Application Details

Application Notes:	Approved: WB Usage: ELISA titer using peptide based assay: 1:62500. Western Blot: Suggested dilution at 0.5 µg/mL in 5 % skim milk / PBS buffer, and HRP conjugated anti-Rabbit IgG should be diluted in 1:50000 - 100000 as second antibody.
Comment:	Target Species of Antibody: Human
Restrictions:	For Research Use only

Handling

Format:	Lyophilized
Reconstitution:	Distilled Water.
Concentration:	Lot specific
Buffer:	Lyophilized from PBS with 2 % sucrose
Handling Advice:	Avoid repeat freeze-thaw cycles.
Storage:	4 °C,-20 °C
Storage Comment:	Long term: -20°C, the use of 50% glycerol is recommended if storing aliquots in -20°C for long term use (up to 1 year) Short term (less than 1 week): 4°C. Avoid freeze-thaw cycles.

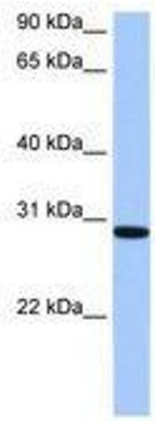


Image 1.