



[Go to Product page](#)

Datasheet for ABIN6739160
anti-YIPF6 antibody (C-Term)

1 Image

Overview

Quantity:	100 µL
Target:	YIPF6
Binding Specificity:	C-Term
Reactivity:	Human, Dog, Rabbit, Rat, Zebrafish (Danio rerio), Monkey, Xenopus laevis
Host:	Rabbit
Clonality:	Polyclonal
Conjugate:	This YIPF6 antibody is un-conjugated
Application:	Western Blotting (WB)

Product Details

Immunogen:	Synthetic peptide from C-Terminus of human YIPF6 (Q96EC8, NP_776195). Percent identity by BLAST analysis: Human, Gibbon, Monkey, Marmoset, Rabbit, Xenopus (100%), Galago, Mouse, Hamster, Elephant, Bovine, Bat, Horse, Pig, Opossum, Guinea pig (92%), Rat, Dog, Zebra finch, Lizard (85%). Type of Immunogen: Synthetic peptide
Isotype:	IgG
Specificity:	Human YIPF6
Predicted Reactivity:	Percent identity by BLAST analysis: Human, Rabbit, Xenopus (100%) Mouse, Bovine, Horse (92%) Rat, Dog (85%).
Purification:	Immunoaffinity purified

Target Details

Target:	YIPF6
Alternative Name:	YIPF6 (YIPF6 Products)
Background:	Name/Gene ID: YIPF6 Synonyms: YIPF6, FinGER6, RP13-253K9.1, Yip1 domain family, member 6, YIP1 family member 6, Protein YIPF6
Gene ID:	286451
NCBI Accession:	NP_776195
UniProt:	Q96EC8

Application Details

Application Notes:	Approved: WB Usage: ELISA titer using peptide based assay: 1:312500. Western Blot: Suggested dilution at 1 μ g/mL in 5 % skim milk / PBS buffer, and HRP conjugated anti-Rabbit IgG should be diluted in 1:50000 - 100000 as second antibody.
Comment:	Target Species of Antibody: Human
Restrictions:	For Research Use only

Handling

Format:	Lyophilized
Reconstitution:	Distilled Water.
Concentration:	Lot specific
Buffer:	Lyophilized from PBS with 2 % sucrose
Handling Advice:	Avoid repeat freeze-thaw cycles.
Storage:	4 °C,-20 °C
Storage Comment:	Long term: -20°C, the use of 50% glycerol is recommended if storing aliquots in -20°C for long term use (up to 1 year) Short term (less than 1 week): 4°C. Avoid freeze-thaw cycles.

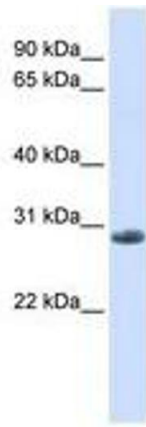


Image 1.