



Datasheet for ABIN6739162
anti-PARD6B antibody (N-Term)



[Go to Product page](#)

1 Image

Overview

Quantity:	100 µL
Target:	PARD6B
Binding Specificity:	N-Term
Reactivity:	Human, Mouse, Rat, Cow, Dog, Guinea Pig, Horse, Rabbit, Zebrafish (Danio rerio), Monkey, Pig, Bat, Chicken
Host:	Rabbit
Clonality:	Polyclonal
Conjugate:	This PARD6B antibody is un-conjugated
Application:	Western Blotting (WB)

Product Details

Immunogen:	Synthetic peptide from N-Terminus of human PARD6B (Q9BYG5, NP_115910). Percent identity by BLAST analysis: Human, Chimpanzee, Gorilla, Gibbon, Monkey, Galago, Marmoset, Mouse, Rat, Elephant, Panda, Dog, Bovine, Bat, Rabbit, Horse, Pig, Guinea pig, Turkey, Zebra finch, Chicken, Platypus (100%), Opossum (92%), Stickleback (85%). Type of Immunogen: Synthetic peptide
Isotype:	IgG
Specificity:	Human PARD6B
Predicted Reactivity:	Percent identity by BLAST analysis: Human, Rat, Dog, Bovine, Rabbit, Horse, Guinea pig, Chicken (100%).

Product Details

Purification: Immunoaffinity purified

Target Details

Target: PARD6B

Alternative Name: PAR6B / PARD6B ([PARD6B Products](#))

Background: Name/Gene ID: PARD6B

Synonyms: PARD6B, PAR6B, PAR-6 beta, PAR-6B

Gene ID: 84612

NCBI Accession: [NP_115910](#)

UniProt: [Q9BYG5](#)

Pathways: [Cell-Cell Junction Organization](#)

Application Details

Application Notes: Approved: WB

Usage: ELISA titer using peptide based assay: 1:312500. Western Blot: Suggested dilution at 1 µg/mL in 5 % skim milk / PBS buffer, and HRP conjugated anti-Rabbit IgG should be diluted in 1:50000 - 100000 as second antibody.

Comment: Target Species of Antibody: Human

Restrictions: For Research Use only

Handling

Format: Lyophilized

Reconstitution: Distilled Water.

Concentration: Lot specific

Buffer: Lyophilized from PBS with 2 % sucrose

Handling Advice: Avoid repeat freeze-thaw cycles.

Storage: 4 °C, -20 °C

Storage Comment: Long term: -20°C, the use of 50% glycerol is recommended if storing aliquots in -20°C for long

Handling

term use (up to 1 year)

Short term (less than 1 week): 4°C. Avoid freeze-thaw cycles.

Images

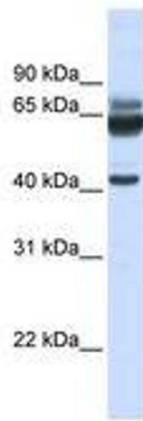


Image 1.