

Datasheet for ABIN6739170
anti-SLC39A11 antibody (AA 180-229)[Go to Product page](#)

1 Image

Overview

Quantity:	100 µL
Target:	SLC39A11
Binding Specificity:	AA 180-229
Reactivity:	Human, Mouse, Rat, Cow, Dog, Horse, Pig, Rabbit, Bat, Hamster, Monkey
Host:	Rabbit
Clonality:	Polyclonal
Conjugate:	This SLC39A11 antibody is un-conjugated
Application:	Western Blotting (WB)

Product Details

Immunogen:	Synthetic peptide located between aa180-229 of human SLC39A11 (B2R8H7, NP_631916). Percent identity by BLAST analysis: Human, Chimpanzee, Gorilla, Gibbon, Monkey, Galago, Marmoset, Mouse, Rat, Hamster, Panda, Dog, Bovine, Bat, Rabbit, Horse, Pig (100%), Guinea pig, Catfish, Salmon, Stickleback (92%), Drosophila (90%), Xenopus (85%). Type of Immunogen: Synthetic peptide
Isotype:	IgG
Specificity:	Human SLC39A11
Predicted Reactivity:	Percent identity by BLAST analysis: Dog, Rabbit, Horse, Pig (100%).
Purification:	Immunoaffinity purified

Target Details

Target:	SLC39A11
Alternative Name:	SLC39A11 / ZIP11 (SLC39A11 Products)
Background:	Name/Gene ID: SLC39A11 Family: Ion Channel Synonyms: SLC39A11, C17orf26, Zinc transporter ZIP11, ZIP-11, ZIP11, Zrt- and Irt-like protein 11
Gene ID:	201266
NCBI Accession:	NP_631916
UniProt:	Q8N1S5

Application Details

Application Notes:	Approved: WB Usage: ELISA titer using peptide based assay: 1:62500. Western Blot: Suggested dilution at 1 µg/mL in 5 % skim milk / PBS buffer, and HRP conjugated anti-Rabbit IgG should be diluted in 1:50000 - 100000 as second antibody.
Comment:	Target Species of Antibody: Human
Restrictions:	For Research Use only

Handling

Format:	Lyophilized
Reconstitution:	Distilled Water.
Concentration:	Lot specific
Buffer:	Lyophilized from PBS with 2 % sucrose
Handling Advice:	Avoid repeat freeze-thaw cycles.
Storage:	4 °C, -20 °C
Storage Comment:	Long term: -20°C, the use of 50% glycerol is recommended if storing aliquots in -20°C for long term use (up to 1 year) Short term (less than 1 week): 4°C. Avoid freeze-thaw cycles.

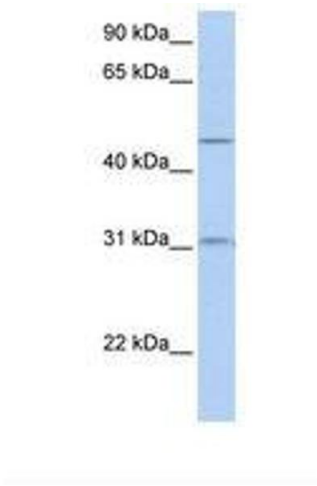


Image 1.