



Datasheet for ABIN6739174
anti-SLC44A3 antibody (AA 288-337)



[Go to Product page](#)

1 Image

Overview

Quantity:	100 µL
Target:	SLC44A3
Binding Specificity:	AA 288-337
Reactivity:	Human, Mouse, Rat, Cow, Dog, Guinea Pig, Horse, Monkey
Host:	Rabbit
Clonality:	Polyclonal
Conjugate:	This SLC44A3 antibody is un-conjugated
Application:	Western Blotting (WB)

Product Details

Immunogen:	Synthetic peptide located between aa288-337 of human SLC44A3 (Q8N4M1-2, NP_689582). Percent identity by BLAST analysis: Human, Chimpanzee, Gorilla, Gibbon, Monkey, Marmoset, Mouse, Rat, Bovine, Horse (100%), Galago (92%), Elephant, Dog (85%). Type of Immunogen: Synthetic peptide
Isotype:	IgG
Specificity:	Human SLC44A3
Predicted Reactivity:	Percent identity by BLAST analysis: Human, Mouse, Rat, Horse (100%) Dog (85%).
Purification:	Immunoaffinity purified

Target Details

Target:	SLC44A3
Alternative Name:	SLC44A3 (SLC44A3 Products)
Background:	Name/Gene ID: SLC44A3 Synonyms: SLC44A3, CTL3
Gene ID:	126969
NCBI Accession:	NP_689582
UniProt:	Q8N4M1

Application Details

Application Notes:	Approved: WB Usage: ELISA titer using peptide based assay: 1:312500. Western Blot: Suggested dilution at 1 µg/mL in 5 % skim milk / PBS buffer, and HRP conjugated anti-Rabbit IgG should be diluted in 1:50000 - 100000 as second antibody.
Comment:	Target Species of Antibody: Human
Restrictions:	For Research Use only

Handling

Format:	Lyophilized
Reconstitution:	Distilled Water.
Concentration:	Lot specific
Buffer:	Lyophilized from PBS with 2 % sucrose
Handling Advice:	Avoid repeat freeze-thaw cycles.
Storage:	4 °C,-20 °C
Storage Comment:	Long term: -20°C, the use of 50% glycerol is recommended if storing aliquots in -20°C for long term use (up to 1 year) Short term (less than 1 week): 4°C. Avoid freeze-thaw cycles.

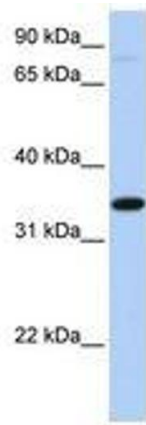


Image 1.