

Datasheet for ABIN6739177
anti-TMEM200B antibody (AA 72-121)[Go to Product page](#)

1 Image

Overview

Quantity:	100 µL
Target:	TMEM200B
Binding Specificity:	AA 72-121
Reactivity:	Human, Dog
Host:	Rabbit
Clonality:	Polyclonal
Conjugate:	This TMEM200B antibody is un-conjugated
Application:	Western Blotting (WB)

Product Details

Immunogen:	Synthetic peptide located between aa72-121 of human TMEM200B (Q69YZ2, NP_001003682). Percent identity by BLAST analysis: Human, Chimpanzee (100%), Galago, Marmoset (92%), Guinea pig (85%), Dog (84%). Type of Immunogen: Synthetic peptide
Isotype:	IgG
Specificity:	Human TMEM200B / TTMB
Predicted Reactivity:	Percent identity by BLAST analysis: Human (100%) Dog (84%).
Purification:	Immunoaffinity purified

Target Details

Target:	TMEM200B
Alternative Name:	TMEM200B / TTMB (TMEM200B Products)
Background:	Name/Gene ID: TMEM200B Synonyms: TMEM200B, Transmembrane protein 200B, TTMB, Two transmembrane B, Transmembrane protein TTMA
Gene ID:	399474
NCBI Accession:	NP_001003682
UniProt:	Q69YZ2

Application Details

Application Notes:	Approved: WB Usage: ELISA titer using peptide based assay: 1:1562500. Western Blot: Suggested dilution at 1 µg/mL in 5 % skim milk / PBS buffer, and HRP conjugated anti-Rabbit IgG should be diluted in 1:50000 - 100000 as second antibody.
Comment:	Target Species of Antibody: Human
Restrictions:	For Research Use only

Handling

Format:	Lyophilized
Reconstitution:	Distilled Water.
Concentration:	Lot specific
Buffer:	Lyophilized from PBS with 2 % sucrose
Handling Advice:	Avoid repeat freeze-thaw cycles.
Storage:	4 °C,-20 °C
Storage Comment:	Long term: -20°C, the use of 50% glycerol is recommended if storing aliquots in -20°C for long term use (up to 1 year) Short term (less than 1 week): 4°C. Avoid freeze-thaw cycles.

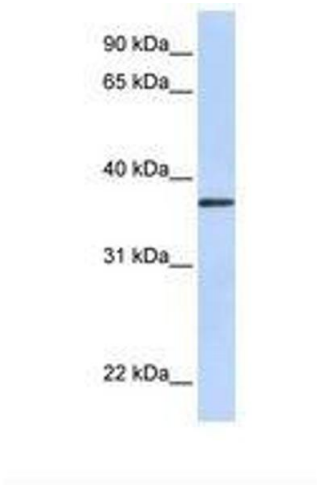


Image 1.