



[Go to Product page](#)

Datasheet for ABIN6739181

## anti-C14orf180 antibody (N-Term)

### 1 Image

#### Overview

Quantity:	100 µL
Target:	C14orf180
Binding Specificity:	N-Term
Reactivity:	Human
Host:	Rabbit
Clonality:	Polyclonal
Conjugate:	This C14orf180 antibody is un-conjugated
Application:	Western Blotting (WB)

#### Product Details

Immunogen:	Synthetic peptide from N-Terminus of human C14orf180 (Q8N912, NP_001008404). Percent identity by BLAST analysis: Human, Chimpanzee, Gorilla (100%), Gibbon, Monkey (92%). Type of Immunogen: Synthetic peptide
Isotype:	IgG
Specificity:	Human C14orf180
Predicted Reactivity:	Percent identity by BLAST analysis: Human (100%).
Purification:	Immunoaffinity purified

#### Target Details

Target:	C14orf180
---------	-----------

## Target Details

---

Alternative Name: C14orf180 ([C14orf180 Products](#))

Background: Name/Gene ID: C14orf180

Synonyms: C14orf180, C14orf77, NRAC

Gene ID: 400258

NCBI Accession: [NP\\_001008404](#)

UniProt: [Q8N912](#)

## Application Details

---

Application Notes: Approved: WB

Usage: ELISA titer using peptide based assay: 1:312500. Western Blot: Suggested dilution at 1  $\mu$ g/mL in 5 % skim milk / PBS buffer, and HRP conjugated anti-Rabbit IgG should be diluted in 1:50000 - 100000 as second antibody.

Comment: Target Species of Antibody: Human

Restrictions: For Research Use only

## Handling

---

Format: Lyophilized

Reconstitution: Distilled Water.

Concentration: Lot specific

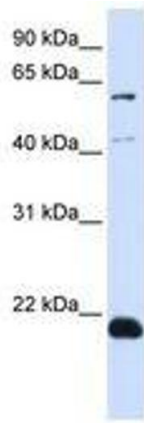
Buffer: Lyophilized from PBS with 2 % sucrose

Handling Advice: Avoid repeat freeze-thaw cycles.

Storage: 4 °C, -20 °C

Storage Comment: Long term: -20°C, the use of 50% glycerol is recommended if storing aliquots in -20°C for long term use (up to 1 year)

Short term (less than 1 week): 4°C. Avoid freeze-thaw cycles.



**Image 1.**