



[Go to Product page](#)

Datasheet for ABIN6739186  
**anti-ZDHHC19 antibody (N-Term)**

1 Image

Overview

Quantity:	100 µL
Target:	ZDHHC19
Binding Specificity:	N-Term
Reactivity:	Human
Host:	Rabbit
Clonality:	Polyclonal
Conjugate:	This ZDHHC19 antibody is un-conjugated
Application:	Western Blotting (WB)

Product Details

Immunogen:	Synthetic peptide from N-Terminus of human ZDHHC19 (Q8WVZ1, NP_001034706). Percent identity by BLAST analysis: Human (100%), Chimpanzee, Gorilla (92%), Orangutan (85%).  Type of Immunogen: Synthetic peptide
Isotype:	IgG
Specificity:	Human ZDHHC19
Predicted Reactivity:	Percent identity by BLAST analysis: Human (100%).
Purification:	Immunoaffinity purified

Target Details

Target:	ZDHHC19
---------	---------

## Target Details

---

Alternative Name: ZDHHC19 ([ZDHHC19 Products](#))

Background: Name/Gene ID: ZDHHC19  
Family: Zinc Finger

Synonyms: ZDHHC19, DHHC-19, DHHC19

Gene ID: 131540

NCBI Accession: [NP\\_001034706](#)

UniProt: [Q8WVZ1](#)

## Application Details

---

Application Notes: Approved: WB

Usage: ELISA titer using peptide based assay: 1:312500. Western Blot: Suggested dilution at 1  $\mu$ g/mL in 5 % skim milk / PBS buffer, and HRP conjugated anti-Rabbit IgG should be diluted in 1:50000 - 100000 as second antibody.

Comment: Target Species of Antibody: Human

Restrictions: For Research Use only

## Handling

---

Format: Lyophilized

Reconstitution: Distilled Water.

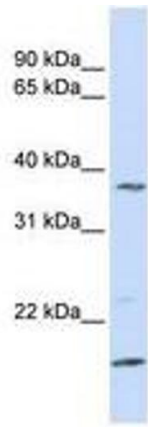
Concentration: Lot specific

Buffer: Lyophilized from PBS with 2 % sucrose

Handling Advice: Avoid repeat freeze-thaw cycles.

Storage: 4 °C, -20 °C

Storage Comment: Long term: -20°C, the use of 50% glycerol is recommended if storing aliquots in -20°C for long term use (up to 1 year)  
Short term (less than 1 week): 4°C. Avoid freeze-thaw cycles.



**Image 1.**