



[Go to Product page](#)

Datasheet for ABIN6739191
anti-TMEM91 antibody (N-Term)

1 Image

Overview

Quantity:	100 µL
Target:	TMEM91
Binding Specificity:	N-Term
Reactivity:	Human, Pig, Cow, Monkey
Host:	Rabbit
Clonality:	Polyclonal
Conjugate:	This TMEM91 antibody is un-conjugated
Application:	Western Blotting (WB)

Product Details

Immunogen:	Synthetic peptide from N-Terminus of human TMEM91 (Q6P434, NP_001036060). Percent identity by BLAST analysis: Human, Chimpanzee, Gorilla, Monkey, Bovine, Pig (100%), Galago, Dog (92%). Type of Immunogen: Synthetic peptide
Isotype:	IgG
Specificity:	Human TMEM91
Predicted Reactivity:	Percent identity by BLAST analysis: Human, Pig (100%) Dog (92%).
Purification:	Immunoaffinity purified

Target Details

Target:	TMEM91
Alternative Name:	TMEM91 (TMEM91 Products)
Background:	Name/Gene ID: TMEM91 Synonyms: TMEM91, Dispanin subfamily C member 3, IFITMD6, Transmembrane protein 91, DSPC3
Gene ID:	641649
NCBI Accession:	NP_001036060
UniProt:	Q6ZNR0

Application Details

Application Notes:	Approved: WB Usage: ELISA titer using peptide based assay: 1:62500. Western Blot: Suggested dilution at 1.0 µg/mL in 5 % skim milk / PBS buffer, and HRP conjugated anti-Rabbit IgG should be diluted in 1:50000 - 100000 as second antibody.
Comment:	Target Species of Antibody: Human
Restrictions:	For Research Use only

Handling

Format:	Lyophilized
Reconstitution:	Distilled Water.
Concentration:	Lot specific
Buffer:	Lyophilized from PBS with 2 % sucrose
Handling Advice:	Avoid repeat freeze-thaw cycles.
Storage:	4 °C,-20 °C
Storage Comment:	Long term: -20°C, the use of 50% glycerol is recommended if storing aliquots in -20°C for long term use (up to 1 year) Short term (less than 1 week): 4°C. Avoid freeze-thaw cycles.

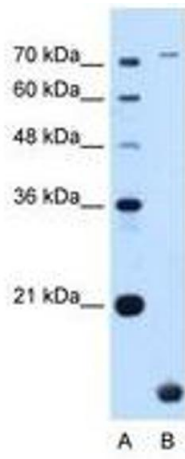


Image 1.