



[Go to Product page](#)

Datasheet for ABIN6739193

anti-KIAA1024 antibody (AA 756-805)

1 Image

Overview

Quantity:	100 µL
Target:	KIAA1024
Binding Specificity:	AA 756-805
Reactivity:	Human, Rat, Mouse, Cow, Dog, Monkey
Host:	Rabbit
Clonality:	Polyclonal
Conjugate:	This KIAA1024 antibody is un-conjugated
Application:	Western Blotting (WB)

Product Details

Immunogen:	Synthetic peptide located between aa756-805 of human KIAA1024 (Q9UPX6, NP_056021). Percent identity by BLAST analysis: Human, Chimpanzee, Gorilla, Gibbon, Monkey, Galago, Marmoset, Mouse, Rat, Panda, Dog, Bovine (100%), Elephant, Bat, Horse, Pig, Guinea pig (92%). Type of Immunogen: Synthetic peptide
Isotype:	IgG
Specificity:	Human KIAA1024
Predicted Reactivity:	Percent identity by BLAST analysis: Human, Dog, Bovine (100%) Guinea pig (92%).
Purification:	Immunoaffinity purified

Target Details

Target:	KIAA1024
Alternative Name:	KIAA1024 (KIAA1024 Products)
Background:	Name/Gene ID: KIAA1024 Synonyms: KIAA1024, UPF0258 protein KIAA1024
Gene ID:	23251
NCBI Accession:	NP_056021
UniProt:	Q9UPX6

Application Details

Application Notes:	Approved: WB Usage: ELISA titer using peptide based assay: 1:312500. Western Blot: Suggested dilution at 1 μ g/mL in 5 % skim milk / PBS buffer, and HRP conjugated anti-Rabbit IgG should be diluted in 1:50000 - 100000 as second antibody.
Comment:	Target Species of Antibody: Human
Restrictions:	For Research Use only

Handling

Format:	Lyophilized
Reconstitution:	Distilled Water.
Concentration:	Lot specific
Buffer:	Lyophilized from PBS with 2 % sucrose
Handling Advice:	Avoid repeat freeze-thaw cycles.
Storage:	4 °C, -20 °C
Storage Comment:	Long term: -20°C, the use of 50% glycerol is recommended if storing aliquots in -20°C for long term use (up to 1 year) Short term (less than 1 week): 4°C. Avoid freeze-thaw cycles.

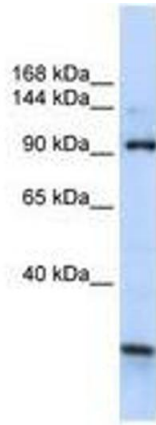


Image 1.