



[Go to Product page](#)

Datasheet for ABIN6739201
anti-DBX2 antibody (AA 21-70)

1 Image

Overview

Quantity:	100 µL
Target:	DBX2
Binding Specificity:	AA 21-70
Reactivity:	Human
Host:	Rabbit
Clonality:	Polyclonal
Conjugate:	This DBX2 antibody is un-conjugated
Application:	Western Blotting (WB)

Product Details

Immunogen:	Synthetic peptide located between aa21-70 of human DBX2 (Q6ZNG2, NP_001004329). Percent identity by BLAST analysis: Human, Chimpanzee (100%), Gorilla, Gibbon, Monkey (92%), Elephant (91%). Type of Immunogen: Synthetic peptide
Isotype:	IgG
Specificity:	Human DBX2
Predicted Reactivity:	Percent identity by BLAST analysis: Human (100%).
Purification:	Immunoaffinity purified

Target Details

Target: DBX2

Alternative Name: DBX2 ([DBX2 Products](#))

Background: Name/Gene ID: DBX2

Synonyms: DBX2, Homeobox protein DBX2, Developing brain homeobox 2

Gene ID: 440097

NCBI Accession: [NP_001004329](#)

UniProt: [Q6ZNG2](#)

Application Details

Application Notes: Approved: WB

Usage: ELISA titer using peptide based assay: 1:1562500. Western Blot: Suggested dilution at 0.25 µg/mL in 5 % skim milk / PBS buffer, and HRP conjugated anti-Rabbit IgG should be diluted in 1:50000 - 100000 as second antibody.

Comment: Target Species of Antibody: Human

Restrictions: For Research Use only

Handling

Format: Lyophilized

Reconstitution: Distilled Water.

Concentration: Lot specific

Buffer: Lyophilized from PBS with 2 % sucrose

Handling Advice: Avoid repeat freeze-thaw cycles.

Storage: 4 °C, -20 °C

Storage Comment: Long term: -20°C, the use of 50% glycerol is recommended if storing aliquots in -20°C for long term use (up to 1 year)

Short term (less than 1 week): 4°C. Avoid freeze-thaw cycles.

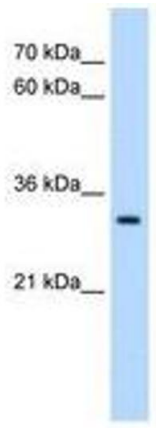


Image 1.