



[Go to Product page](#)

Datasheet for ABIN6739210
anti-SCAND3 antibody (C-Term)

1 Image

Overview

Quantity:	100 µL
Target:	SCAND3
Binding Specificity:	C-Term
Reactivity:	Human, Horse, Monkey
Host:	Rabbit
Clonality:	Polyclonal
Conjugate:	This SCAND3 antibody is un-conjugated
Application:	Western Blotting (WB)

Product Details

Immunogen:	Synthetic peptide from C-Terminus of human SCAND3 (Q6R2W3, NP_443155). Percent identity by BLAST analysis: Human, Chimpanzee, Gorilla, Gibbon, Monkey, Galago, Marmoset, Horse (100%). Type of Immunogen: Synthetic peptide
Isotype:	IgG
Specificity:	Human SCAND3
Predicted Reactivity:	Percent identity by BLAST analysis: Horse (100%).
Purification:	Immunoaffinity purified

Target Details

Target:	SCAND3
Alternative Name:	SCAND3 (SCAND3 Products)
Background:	Name/Gene ID: ZBED9 Synonyms: ZBED9, DJ1186N24.3, ZFP38-L, Protein ZNF452, SCAN domain containing 3, Zinc finger protein 452, ZNF305P2, ZNF452, KIAA1925, SCAND3
Gene ID:	114821
NCBI Accession:	NP_443155
UniProt:	Q6R2W3

Application Details

Application Notes:	Approved: WB Usage: ELISA titer using peptide based assay: 1:312500. Western Blot: Suggested dilution at 1 µg/mL in 5 % skim milk / PBS buffer, and HRP conjugated anti-Rabbit IgG should be diluted in 1:50000 - 100000 as second antibody.
Comment:	Target Species of Antibody: Human
Restrictions:	For Research Use only

Handling

Format:	Lyophilized
Reconstitution:	Distilled Water.
Concentration:	Lot specific
Buffer:	Lyophilized from PBS with 2 % sucrose
Handling Advice:	Avoid repeat freeze-thaw cycles.
Storage:	4 °C,-20 °C
Storage Comment:	Long term: -20°C, the use of 50% glycerol is recommended if storing aliquots in -20°C for long term use (up to 1 year) Short term (less than 1 week): 4°C. Avoid freeze-thaw cycles.

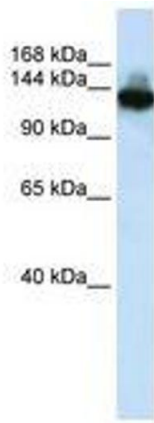


Image 1.