



[Go to Product page](#)

Datasheet for ABIN6739211
anti-ZNF483 antibody (AA 38-87)

1 Image

Overview

Quantity:	100 µL
Target:	ZNF483
Binding Specificity:	AA 38-87
Reactivity:	Human, Cow, Monkey
Host:	Rabbit
Clonality:	Polyclonal
Conjugate:	This ZNF483 antibody is un-conjugated
Application:	Western Blotting (WB)

Product Details

Immunogen:	Synthetic peptide located between aa38-87 of human ZNF483 (Q8TF39, NP_597721). Percent identity by BLAST analysis: Human, Chimpanzee, Gorilla, Orangutan, Gibbon, Monkey (100%), Galago, Dog, Horse (92%), Marmoset, Rat, Panda, Bovine, Bat, Opossum, Platypus (84%), Mouse (76%). Type of Immunogen: Synthetic peptide
Isotype:	IgG
Specificity:	Human ZNF483
Predicted Reactivity:	Percent identity by BLAST analysis: Human (100%) Dog, Horse (92%).
Purification:	Immunoaffinity purified

Target Details

Target:	ZNF483
Alternative Name:	ZNF483 (ZNF483 Products)
Background:	Name/Gene ID: ZNF483 Family: Zinc Finger Synonyms: ZNF483, KIAA1962, Zinc finger protein HIT-10, ZKSCAN16, Zinc finger protein 483, ZSCAN48
Gene ID:	158399
NCBI Accession:	NP_597721
UniProt:	Q8TF39

Application Details

Application Notes:	Approved: WB Usage: ELISA titer using peptide based assay: 1:312500. Western Blot: Suggested dilution at 1 µg/mL in 5 % skim milk / PBS buffer, and HRP conjugated anti-Rabbit IgG should be diluted in 1:50000 - 100000 as second antibody.
Comment:	Target Species of Antibody: Human
Restrictions:	For Research Use only

Handling

Format:	Lyophilized
Reconstitution:	Distilled Water.
Concentration:	Lot specific
Buffer:	Lyophilized from PBS with 2 % sucrose
Handling Advice:	Avoid repeat freeze-thaw cycles.
Storage:	4 °C, -20 °C
Storage Comment:	Long term: -20°C, the use of 50% glycerol is recommended if storing aliquots in -20°C for long term use (up to 1 year) Short term (less than 1 week): 4°C. Avoid freeze-thaw cycles.

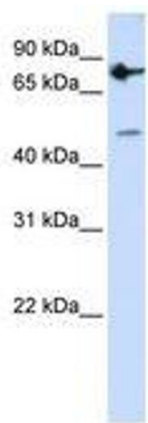


Image 1.