



[Go to Product page](#)

Datasheet for ABIN6739219
anti-PLAC1L antibody (AA 71-120)

1 Image

Overview

Quantity:	100 µL
Target:	PLAC1L
Binding Specificity:	AA 71-120
Reactivity:	Human, Horse, Monkey
Host:	Rabbit
Clonality:	Polyclonal
Conjugate:	This PLAC1L antibody is un-conjugated
Application:	Western Blotting (WB)

Product Details

Immunogen:	Synthetic peptide located between aa71-120 of human PLAC1L (Q86WS3, NP_776162). Percent identity by BLAST analysis: Human, Gorilla, Gibbon, Monkey (100%), Marmoset (85%), Horse (83%). Type of Immunogen: Synthetic peptide
Isotype:	IgG
Specificity:	Human PLAC1L
Predicted Reactivity:	Percent identity by BLAST analysis: Human (100%) Horse (83%).
Purification:	Immunoaffinity purified

Target Details

Target:	PLAC1L
Alternative Name:	OOSP2 / PLAC1L (PLAC1L Products)
Background:	Name/Gene ID: OOSP2 Synonyms: OOSP2, PLAC1L, TMEM122, Transmembrane protein 122, Placenta-specific 1-like
Gene ID:	219990
NCBI Accession:	NP_776162
UniProt:	Q86WS3

Application Details

Application Notes:	Approved: WB Usage: ELISA titer using peptide based assay: 1:312500. Western Blot: Suggested dilution at 0.5 µg/mL in 5 % skim milk / PBS buffer, and HRP conjugated anti-Rabbit IgG should be diluted in 1:50000 - 100000 as second antibody.
Comment:	Target Species of Antibody: Human
Restrictions:	For Research Use only

Handling

Format:	Lyophilized
Reconstitution:	Distilled Water.
Concentration:	Lot specific
Buffer:	Lyophilized from PBS with 2 % sucrose
Handling Advice:	Avoid repeat freeze-thaw cycles.
Storage:	4 °C, -20 °C
Storage Comment:	Long term: -20°C, the use of 50% glycerol is recommended if storing aliquots in -20°C for long term use (up to 1 year) Short term (less than 1 week): 4°C. Avoid freeze-thaw cycles.

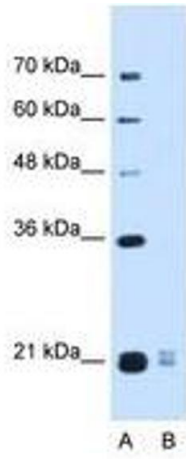


Image 1.