



[Go to Product page](#)

Datasheet for ABIN6739225

anti-C19orf47 antibody (AA 211-260)

1 Image

Overview

Quantity:	100 µL
Target:	C19orf47
Binding Specificity:	AA 211-260
Reactivity:	Human, Mouse, Rat, Guinea Pig, Dog, Rabbit, Cow, Horse, Bat, Monkey
Host:	Rabbit
Clonality:	Polyclonal
Conjugate:	This C19orf47 antibody is un-conjugated
Application:	Western Blotting (WB)

Product Details

Immunogen:	Synthetic peptide located between aa211-260 of human C19orf47 (Q8N9M1). Percent identity by BLAST analysis: Human, Chimpanzee, Gorilla, Gibbon, Monkey, Galago, Marmoset, Mouse, Rat, Dog, Bovine, Bat, Rabbit, Horse, Opossum, Guinea pig, Platypus (100%), Elephant (92%), Xenopus (85%). Type of Immunogen: Synthetic peptide
Isotype:	IgG
Specificity:	Human C19orf47
Predicted Reactivity:	Percent identity by BLAST analysis: Dog, Rabbit, Horse, Guinea pig (100%) Xenopus (85%).
Purification:	Immunoaffinity purified

Target Details

Target:	C19orf47
Alternative Name:	C19orf47 (C19orf47 Products)
Background:	Name/Gene ID: C19orf47 Synonyms: C19orf47
Gene ID:	126526
UniProt:	Q8N9M1

Application Details

Application Notes:	Approved: WB Usage: ELISA titer using peptide based assay: 1:1562500. Western Blot: Suggested dilution at 1 µg/mL in 5 % skim milk / PBS buffer, and HRP conjugated anti-Rabbit IgG should be diluted in 1:50000 - 100000 as second antibody.
Comment:	Target Species of Antibody: Human
Restrictions:	For Research Use only

Handling

Format:	Lyophilized
Reconstitution:	Distilled Water.
Concentration:	Lot specific
Buffer:	Lyophilized from PBS with 2 % sucrose
Handling Advice:	Avoid repeat freeze-thaw cycles.
Storage:	4 °C,-20 °C
Storage Comment:	Long term: -20°C, the use of 50% glycerol is recommended if storing aliquots in -20°C for long term use (up to 1 year) Short term (less than 1 week): 4°C. Avoid freeze-thaw cycles.

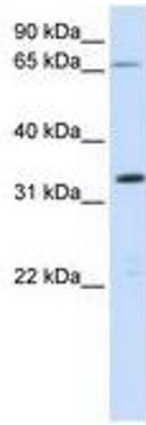


Image 1.