

Datasheet for ABIN6739227
anti-TTC6 antibody (AA 368-417)[Go to Product page](#)

1 Image

Overview

Quantity:	100 µL
Target:	TTC6
Binding Specificity:	AA 368-417
Reactivity:	Human, Cow, Dog, Horse, Mouse, Pig, Rabbit, Bat
Host:	Rabbit
Clonality:	Polyclonal
Conjugate:	This TTC6 antibody is un-conjugated
Application:	Western Blotting (WB)

Product Details

Immunogen:	Synthetic peptide located between aa368-417 of human TTC6 (Q86TZ1). Percent identity by BLAST analysis: Human, Galago, Marmoset, Mouse, Dog, Bovine, Bat, Rabbit, Horse, Pig (100%), Monkey, Elephant, Guinea pig (92%). Type of Immunogen: Synthetic peptide
Isotype:	IgG
Specificity:	Human TTC6
Predicted Reactivity:	Percent identity by BLAST analysis: Human, Dog, Bovine, Rabbit, Horse, Pig (100%) Guinea pig (92%).
Purification:	Immunoaffinity purified

Target Details

Target:	TTC6
Alternative Name:	TTC6 (TTC6 Products)
Background:	Name/Gene ID: TTC6 Synonyms: TTC6, C14orf25, Non-protein coding RNA 291, TPR repeat protein 6, NCRNA00291
Gene ID:	319089
UniProt:	Q86TZ1

Application Details

Application Notes:	Approved: WB Usage: ELISA titer using peptide based assay: 1:12500. Western Blot: Suggested dilution at 0.5 µg/mL in 5 % skim milk / PBS buffer, and HRP conjugated anti-Rabbit IgG should be diluted in 1:50000 - 100000 as second antibody.
Comment:	Target Species of Antibody: Human
Restrictions:	For Research Use only

Handling

Format:	Lyophilized
Reconstitution:	Distilled Water.
Concentration:	Lot specific
Buffer:	Lyophilized from PBS with 2 % sucrose
Handling Advice:	Avoid repeat freeze-thaw cycles.
Storage:	4 °C, -20 °C
Storage Comment:	Long term: -20°C, the use of 50% glycerol is recommended if storing aliquots in -20°C for long term use (up to 1 year) Short term (less than 1 week): 4°C. Avoid freeze-thaw cycles.

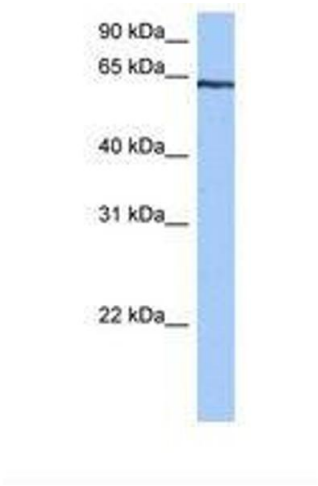


Image 1.