



Datasheet for ABIN6739253
anti-GLYATL3 antibody (AA 38-87)



[Go to Product page](#)

1 Image

Overview

Quantity:	100 µL
Target:	GLYATL3
Binding Specificity:	AA 38-87
Reactivity:	Human
Host:	Rabbit
Clonality:	Polyclonal
Conjugate:	This GLYATL3 antibody is un-conjugated
Application:	Western Blotting (WB)

Product Details

Immunogen:	Synthetic peptide located between aa38-87 of human GLYATL3 (Q5SZD4). Percent identity by BLAST analysis: Human, Chimpanzee, Gorilla, Gibbon, Galago, Elephant (100%), Marmoset, Mouse, Rat, Panda, Dog, Bovine, Bat, Guinea pig (92%), Pig (90%). Type of Immunogen: Synthetic peptide
Isotype:	IgG
Specificity:	Human GLYATL3 / C6orf140
Predicted Reactivity:	Percent identity by BLAST analysis: Human (100%) Rat, Dog, Bovine (92%).
Purification:	Immunoaffinity purified

Target Details

Target:	GLYATL3
Alternative Name:	C6orf140 / GLYATL3 (GLYATL3 Products)
Background:	Name/Gene ID: GLYATL3 Synonyms: GLYATL3, BA28H17.2, C6orf140
Gene ID:	389396
UniProt:	Q5SZD4

Application Details

Application Notes:	Approved: WB Usage: ELISA titer using peptide based assay: 1:62500. Western Blot: Suggested dilution at 1 μ g/mL in 5 % skim milk / PBS buffer, and HRP conjugated anti-Rabbit IgG should be diluted in 1:50000 - 100000 as second antibody.
Comment:	Target Species of Antibody: Human
Restrictions:	For Research Use only

Handling

Format:	Lyophilized
Reconstitution:	Distilled Water.
Concentration:	Lot specific
Buffer:	Lyophilized from PBS with 2 % sucrose
Handling Advice:	Avoid repeat freeze-thaw cycles.
Storage:	4 °C,-20 °C
Storage Comment:	Long term: -20°C, the use of 50% glycerol is recommended if storing aliquots in -20°C for long term use (up to 1 year) Short term (less than 1 week): 4°C. Avoid freeze-thaw cycles.

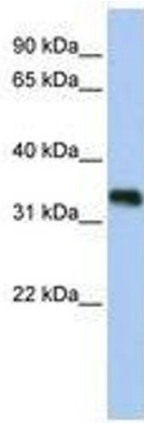


Image 1.