



[Go to Product page](#)

Datasheet for ABIN6739258
anti-BAT5 antibody (AA 36-85)

1 Image

Overview

Quantity:	100 µL
Target:	BAT5 (ABHD16A)
Binding Specificity:	AA 36-85
Reactivity:	Human, Mouse, Rat, Cow, Guinea Pig, Horse, Dog, Bat, Pig, Monkey
Host:	Rabbit
Clonality:	Polyclonal
Conjugate:	This BAT5 antibody is un-conjugated
Application:	Western Blotting (WB)

Product Details

Immunogen:	Synthetic peptide located between aa36-85 of human ABHD16A (O95870, NP_066983). Percent identity by BLAST analysis: Human, Chimpanzee, Gorilla, Orangutan, Gibbon, Monkey, Galago, Marmoset, Mouse, Rat, Elephant, Panda, Dog, Bovine, Bat, Horse, Pig, Opossum, Guinea pig, Platypus (100%), Xenopus (84%). Type of Immunogen: Synthetic peptide
Isotype:	IgG
Specificity:	Human ABHD16A / BAT5
Predicted Reactivity:	Percent identity by BLAST analysis: Human, Bovine, Pig (100%).
Purification:	Immunoaffinity purified

Target Details

Target:	BAT5 (ABHD16A)
Alternative Name:	ABHD16A / BAT5 (ABHD16A Products)
Background:	Name/Gene ID: ABHD16A Synonyms: ABHD16A, D6S82E, HLA-B associated transcript 5, HLA-B-associated transcript 5, G5, NG26, PP199, BAT5, Protein G5
Gene ID:	7920
NCBI Accession:	NP_066983
UniProt:	O95870

Application Details

Application Notes:	Approved: WB Usage: ELISA titer using peptide based assay: 1:312500. Western Blot: Suggested dilution at 1 μ g/mL in 5 % skim milk / PBS buffer, and HRP conjugated anti-Rabbit IgG should be diluted in 1:50000 - 100000 as second antibody.
Comment:	Target Species of Antibody: Human
Restrictions:	For Research Use only

Handling

Format:	Lyophilized
Reconstitution:	Distilled Water.
Concentration:	Lot specific
Buffer:	Lyophilized from PBS with 2 % sucrose
Handling Advice:	Avoid repeat freeze-thaw cycles.
Storage:	4 °C,-20 °C
Storage Comment:	Long term: -20°C, the use of 50% glycerol is recommended if storing aliquots in -20°C for long term use (up to 1 year) Short term (less than 1 week): 4°C. Avoid freeze-thaw cycles.

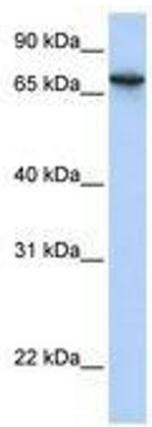


Image 1.