



[Go to Product page](#)

Datasheet for ABIN6739272
anti-Tmc2 antibody (AA 614-663)

1 Image

Overview

Quantity:	100 µL
Target:	Tmc2
Binding Specificity:	AA 614-663
Reactivity:	Human, Mouse, Rat, Cow, Dog, Guinea Pig, Horse, Rabbit, Bat, Chicken, Monkey
Host:	Rabbit
Clonality:	Polyclonal
Conjugate:	This Tmc2 antibody is un-conjugated
Application:	Western Blotting (WB)

Product Details

Immunogen:	Synthetic peptide located between aa614-663 of human TMC2 (Q8TDI7, NP_542789). Percent identity by BLAST analysis: Human, Chimpanzee, Gorilla, Gibbon, Galago, Marmoset, Mouse, Rat, Elephant, Panda, Dog, Bovine, Bat, Rabbit, Horse, Guinea pig, Turkey, Zebra finch, Sparrow, Chicken (100%), Opossum, Platypus, Lizard, Pufferfish (92%), Stickleback (85%), Monkey, Pig, Xenopus (84%). Type of Immunogen: Synthetic peptide
Isotype:	IgG
Specificity:	Human TMC2
Predicted Reactivity:	Percent identity by BLAST analysis: Human, Mouse, Rat, Dog, Bovine, Rabbit, Horse, Guinea pig, Chicken (100%).

Product Details

Purification: Immunoaffinity purified

Target Details

Target: Tmc2

Alternative Name: TMC2 ([Tmc2 Products](#))

Background: Name/Gene ID: TMC2

Synonyms: TMC2, C20orf145, DJ686C3.3, Transmembrane channel-like 2

Gene ID: 117532

NCBI Accession: [NP_542789](#)

UniProt: [Q8TDI7](#)

Application Details

Application Notes: Approved: WB

Usage: ELISA titer using peptide based assay: 1:1562500. Western Blot: Suggested dilution at 1 µg/mL in 5 % skim milk / PBS buffer, and HRP conjugated anti-Rabbit IgG should be diluted in 1:50000 - 100000 as second antibody.

Comment: Target Species of Antibody: Human

Restrictions: For Research Use only

Handling

Format: Lyophilized

Reconstitution: Distilled Water.

Concentration: Lot specific

Buffer: Lyophilized from PBS with 2 % sucrose

Handling Advice: Avoid repeat freeze-thaw cycles.

Storage: 4 °C, -20 °C

Storage Comment: Long term: -20°C, the use of 50% glycerol is recommended if storing aliquots in -20°C for long term use (up to 1 year)

Handling

Short term (less than 1 week): 4°C. Avoid freeze-thaw cycles.

Images

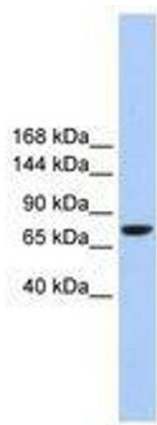


Image 1.