

Datasheet for ABIN6739274

**anti-GTPase, IMAP Family Member 1 (GIMAP1) (N-Term)  
antibody**[Go to Product page](#)**1** Image

## Overview

Quantity:	100 µL
Target:	GTPase, IMAP Family Member 1 (GIMAP1)
Binding Specificity:	N-Term
Reactivity:	Human
Host:	Rabbit
Clonality:	Polyclonal
Conjugate:	Un-conjugated
Application:	Western Blotting (WB)

## Product Details

Immunogen:	Synthetic peptide from N-Terminus of human GIMAP1 (Q8WWP7, NP_570115). Percent identity by BLAST analysis: Human (100%), Gorilla (85%).  Type of Immunogen: Synthetic peptide
Isotype:	IgG
Specificity:	Human GIMAP1
Predicted Reactivity:	Percent identity by BLAST analysis: Human (100%).
Purification:	Immunoaffinity purified

## Target Details

Target:	GTPase, IMAP Family Member 1 (GIMAP1)
---------	---------------------------------------

## Target Details

Alternative Name:	GIMAP1 ( <a href="#">GIMAP1 Products</a> )
Background:	Name/Gene ID: GIMAP1  Synonyms: GIMAP1, GTPase, IMAP family member 1, IMAP1, HIMAP1, IMAP38, Immunity-associated protein 1, GTPase IMAP family member 1, Immunity associated protein 1
Gene ID:	170575
NCBI Accession:	<a href="#">NP_570115</a>
UniProt:	<a href="#">Q8WWP7</a>

## Application Details

Application Notes:	Approved: WB  Usage: ELISA titer using peptide based assay: 1:312500. Western Blot: Suggested dilution at 0.5 µg/mL in 5 % skim milk / PBS buffer, and HRP conjugated anti-Rabbit IgG should be diluted in 1:50000 - 100000 as second antibody.
Comment:	Target Species of Antibody: Human
Restrictions:	For Research Use only

## Handling

Format:	Lyophilized
Reconstitution:	Distilled Water.
Concentration:	Lot specific
Buffer:	Lyophilized from PBS with 2 % sucrose
Handling Advice:	Avoid repeat freeze-thaw cycles.
Storage:	4 °C, -20 °C
Storage Comment:	Long term: -20°C, the use of 50% glycerol is recommended if storing aliquots in -20°C for long term use (up to 1 year) Short term (less than 1 week): 4°C. Avoid freeze-thaw cycles.

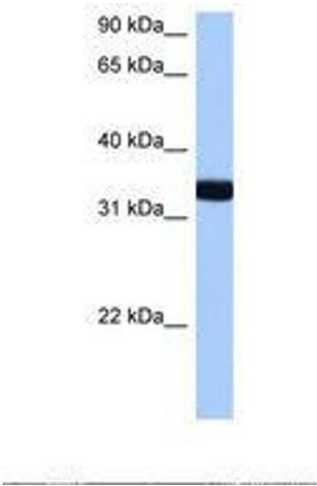


Image 1.