



[Go to Product page](#)

Datasheet for ABIN6739287
anti-FEZF1 antibody (AA 402-451)

1 Image

Overview

Quantity:	100 µL
Target:	FEZF1
Binding Specificity:	AA 402-451
Reactivity:	Human, Guinea Pig, Horse
Host:	Rabbit
Clonality:	Polyclonal
Conjugate:	This FEZF1 antibody is un-conjugated
Application:	Western Blotting (WB)

Product Details

Immunogen:	Synthetic peptide located between aa402-451 of human FEZF1 (A0PJY2, NP_001019784). Percent identity by BLAST analysis: Human, Chimpanzee (100%), Gibbon, Rabbit (92%), Monkey (85%), Marmoset (84%). Type of Immunogen: Synthetic peptide
Isotype:	IgG
Specificity:	Human FEZF1 / FEZ
Predicted Reactivity:	Percent identity by BLAST analysis: Human (100%) Rabbit (92%).
Purification:	Immunoaffinity purified

Target Details

Target: FEZF1

Alternative Name: FEZF1 / FEZ ([FEZF1 Products](#))

Background: Name/Gene ID: FEZF1

Synonyms: FEZF1, FEZ family zinc finger 1, Zinc finger protein 312B, ZNF312B, FEZ

Gene ID: 389549

NCBI Accession: [NP_001019784](#)

Application Details

Application Notes: Approved: WB (1 µg/mL)

Usage: ELISA titer using peptide based assay: 1:62500. Western Blot: Suggested dilution at 1 µg/mL in 5 % skim milk / PBS buffer, and HRP conjugated anti-Rabbit IgG should be diluted in 1:50000 - 100000 as second antibody.

Comment: Target Species of Antibody: Human

Restrictions: For Research Use only

Handling

Format: Lyophilized

Reconstitution: Distilled Water.

Concentration: Lot specific

Buffer: Lyophilized from PBS with 2 % sucrose

Handling Advice: Avoid repeat freeze-thaw cycles.

Storage: 4 °C, -20 °C

Storage Comment: Long term: -20°C, the use of 50% glycerol is recommended if storing aliquots in -20°C for long term use (up to 1 year)

Short term (less than 1 week): 4°C. Avoid freeze-thaw cycles.

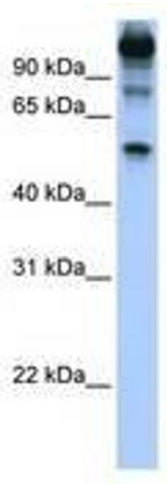


Image 1.