



Datasheet for ABIN6739289
anti-PHF12 antibody (AA 866-915)



[Go to Product page](#)

1 Image

Overview

Quantity:	100 µL
Target:	PHF12
Binding Specificity:	AA 866-915
Reactivity:	Mouse, Human, Cow, Horse, Rabbit, Rat, Dog, Guinea Pig, Pig, Bat, Monkey
Host:	Rabbit
Clonality:	Polyclonal
Conjugate:	This PHF12 antibody is un-conjugated
Application:	Western Blotting (WB)

Product Details

Immunogen:	Synthetic peptide located between aa866-915 of human PHF12 (Q96QT6, NP_001028733). Percent identity by BLAST analysis: Human, Chimpanzee, Gorilla, Gibbon, Monkey, Galago, Marmoset, Mouse, Rat, Elephant, Panda, Dog, Bovine, Bat, Rabbit, Horse, Pig, Opossum, Guinea pig (100%), Turkey, Chicken, Xenopus (85%). Type of Immunogen: Synthetic peptide
Isotype:	IgG
Specificity:	Human PHF12
Predicted Reactivity:	Percent identity by BLAST analysis: Human, Mouse, Dog, Bovine, Rabbit, Horse, Pig, Guinea pig (100%) Chicken, Xenopus (85%).
Purification:	Immunoaffinity purified

Target Details

Target: PHF12

Alternative Name: PHF12 ([PHF12 Products](#))

Background: Name/Gene ID: PHF12

Synonyms: PHF12, KIAA1523, PHD finger protein 12, PF1, PHD factor 1

Gene ID: 57649

NCBI Accession: [NP_001028733](#)

UniProt: [Q96QT6](#)

Application Details

Application Notes: Approved: WB

Usage: ELISA titer using peptide based assay: 1:312500. Western Blot: Suggested dilution at 1 µg/mL in 5 % skim milk / PBS buffer, and HRP conjugated anti-Rabbit IgG should be diluted in 1:50000 - 100000 as second antibody.

Comment: Target Species of Antibody: Human

Restrictions: For Research Use only

Handling

Format: Lyophilized

Reconstitution: Distilled Water.

Concentration: Lot specific

Buffer: Lyophilized from PBS with 2 % sucrose

Handling Advice: Avoid repeat freeze-thaw cycles.

Storage: 4 °C, -20 °C

Storage Comment: Long term: -20°C, the use of 50% glycerol is recommended if storing aliquots in -20°C for long term use (up to 1 year)

Short term (less than 1 week): 4°C. Avoid freeze-thaw cycles.

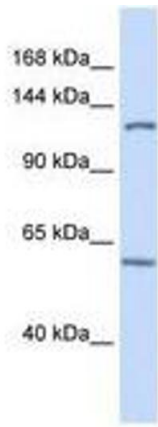


Image 1.