



[Go to Product page](#)

Datasheet for ABIN6739295
anti-ZFYVE28 antibody (AA 131-180)

1 Image

Overview

Quantity:	100 µL
Target:	ZFYVE28
Binding Specificity:	AA 131-180
Reactivity:	Human, Mouse, Rat, Cow, Dog, Pig
Host:	Rabbit
Clonality:	Polyclonal
Conjugate:	This ZFYVE28 antibody is un-conjugated
Application:	Western Blotting (WB)

Product Details

Immunogen:	Synthetic peptide located between aa131-180 of human ZFYVE28 (Q9HCC9). Percent identity by BLAST analysis: Human, Chimpanzee, Gorilla, Gibbon, Galago, Mouse, Rat, Panda, Dog, Bovine, Pig (100%), Marmoset, Rabbit, Opossum, Guinea pig, Turkey, Zebra finch, Chicken, Xenopus, Zebrafish (92%), Stickleback (84%). Type of Immunogen: Synthetic peptide
Isotype:	IgG
Specificity:	Human ZFYVE28
Predicted Reactivity:	Percent identity by BLAST analysis: Human, Mouse, Rat, Dog, Bovine (100%) Rabbit, Guinea pig, Chicken, Zebrafish (92%).
Purification:	Immunoaffinity purified

Target Details

Target:	ZFYVE28
Alternative Name:	ZFYVE28 (ZFYVE28 Products)
Background:	Name/Gene ID: ZFYVE28 Family: Zinc Finger Synonyms: ZFYVE28, KIAA1643, LYST2, LST2, HLst2
Gene ID:	57732
UniProt:	Q9HCC9
Pathways:	EGFR Signaling Pathway

Application Details

Application Notes:	Approved: WB Usage: ELISA titer using peptide based assay: 1:1562500. Western Blot: Suggested dilution at 1 µg/mL in 5 % skim milk / PBS buffer, and HRP conjugated anti-Rabbit IgG should be diluted in 1:50000 - 100000 as second antibody.
Comment:	Target Species of Antibody: Human
Restrictions:	For Research Use only

Handling

Format:	Lyophilized
Reconstitution:	Distilled Water.
Concentration:	Lot specific
Buffer:	Lyophilized from PBS with 2 % sucrose
Handling Advice:	Avoid repeat freeze-thaw cycles.
Storage:	4 °C,-20 °C
Storage Comment:	Long term: -20°C, the use of 50% glycerol is recommended if storing aliquots in -20°C for long term use (up to 1 year) Short term (less than 1 week): 4°C. Avoid freeze-thaw cycles.

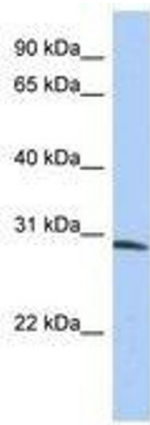


Image 1.