



[Go to Product page](#)

Datasheet for ABIN6739298

## anti-ZCCHC3 antibody (AA 181-230)

### 1 Image

#### Overview

Quantity:	100 µL
Target:	ZCCHC3
Binding Specificity:	AA 181-230
Reactivity:	Human, Mouse, Cow, Rat, Rabbit, Dog, Guinea Pig, Horse, Pig, Monkey
Host:	Rabbit
Clonality:	Polyclonal
Conjugate:	This ZCCHC3 antibody is un-conjugated
Application:	Western Blotting (WB)

#### Product Details

Immunogen:	Synthetic peptide located between aa181-230 of human ZCCHC3 (Q9NUD5, NP_149080). Percent identity by BLAST analysis: Human, Chimpanzee, Monkey, Galago, Marmoset, Mouse, Rat, Elephant, Dog, Bovine, Rabbit, Horse, Pig, Guinea pig (100%).  Type of Immunogen: Synthetic peptide
Isotype:	IgG
Specificity:	Human ZCCHC3
Predicted Reactivity:	Percent identity by BLAST analysis: Mouse, Rat, Dog, Bovine, Rabbit, Horse, Guinea pig (100%).
Purification:	Immunoaffinity purified

## Target Details

---

Target:	ZCCHC3
Alternative Name:	ZCCHC3 ( <a href="#">ZCCHC3 Products</a> )
Background:	Name/Gene ID: ZCCHC3 Family: Zinc Finger  Synonyms: ZCCHC3, C20orf99, DJ1103G7.7
Gene ID:	85364
NCBI Accession:	<a href="#">NP_149080</a>
UniProt:	<a href="#">Q9NUD5</a>

## Application Details

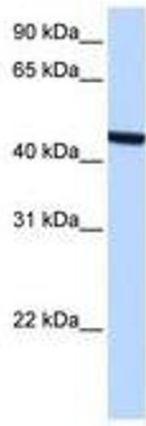
---

Application Notes:	Approved: WB  Usage: ELISA titer using peptide based assay: 1:62500. Western Blot: Suggested dilution at 1 $\mu$ g/mL in 5 % skim milk / PBS buffer, and HRP conjugated anti-Rabbit IgG should be diluted in 1:50000 - 100000 as second antibody.
Comment:	Target Species of Antibody: Human
Restrictions:	For Research Use only

## Handling

---

Format:	Lyophilized
Reconstitution:	Distilled Water.
Concentration:	Lot specific
Buffer:	Lyophilized from PBS with 2 % sucrose
Handling Advice:	Avoid repeat freeze-thaw cycles.
Storage:	4 °C,-20 °C
Storage Comment:	Long term: -20°C, the use of 50% glycerol is recommended if storing aliquots in -20°C for long term use (up to 1 year) Short term (less than 1 week): 4°C. Avoid freeze-thaw cycles.



**Image 1.**