



Datasheet for ABIN6739322 **anti-PYHIN1 antibody (AA 38-87)**



[Go to Product page](#)

1 Image

Overview

Quantity:	100 µL
Target:	PYHIN1
Binding Specificity:	AA 38-87
Reactivity:	Human, Monkey
Host:	Rabbit
Clonality:	Polyclonal
Conjugate:	This PYHIN1 antibody is un-conjugated
Application:	Western Blotting (WB)

Product Details

Immunogen:	Synthetic peptide located between aa38-87 of human PYHIN1 (Q6K0P9-4, NP_945148). Percent identity by BLAST analysis: Human, Chimpanzee, Gorilla, Gibbon, Monkey (100%). Type of Immunogen: Synthetic peptide
Isotype:	IgG
Specificity:	Human PYHIN1
Predicted Reactivity:	Percent identity by BLAST analysis: Human (100%).
Purification:	Immunoaffinity purified

Target Details

Target:	PYHIN1
---------	--------

Target Details

Alternative Name: IFIX / PYHIN1 ([PYHIN1 Products](#))

Background: Name/Gene ID: PYHIN1

Synonyms: PYHIN1, IFIX, Interferon-inducible protein X, RP11-520H16.1

Gene ID: 149628

NCBI Accession: [NP_945148](#)

UniProt: [Q6K0P9](#)

Application Details

Application Notes: Approved: WB

Usage: ELISA titer using peptide based assay: 1:62500. Western Blot: Suggested dilution at 1 μ g/mL in 5 % skim milk / PBS buffer, and HRP conjugated anti-Rabbit IgG should be diluted in 1:50000 - 100000 as second antibody.

Comment: Target Species of Antibody: Human

Restrictions: For Research Use only

Handling

Format: Lyophilized

Reconstitution: Distilled Water.

Concentration: Lot specific

Buffer: Lyophilized from PBS with 2 % sucrose

Handling Advice: Avoid repeat freeze-thaw cycles.

Storage: 4 °C, -20 °C

Storage Comment: Long term: -20°C, the use of 50% glycerol is recommended if storing aliquots in -20°C for long term use (up to 1 year)

Short term (less than 1 week): 4°C. Avoid freeze-thaw cycles.

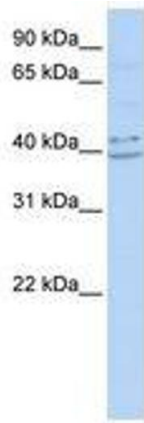


Image 1.