

Datasheet for ABIN6739324
anti-MDFIC antibody (AA 188-237)



[Go to Product page](#)

1 Image

Overview

Quantity:	100 µL
Target:	MDFIC
Binding Specificity:	AA 188-237
Reactivity:	Human, Pig, Cow, Dog
Host:	Rabbit
Clonality:	Polyclonal
Conjugate:	This MDFIC antibody is un-conjugated
Application:	Western Blotting (WB)

Product Details

Immunogen:	Synthetic peptide located between aa188-237 of human MDFIC (Q9P1T7, NP_951038). Percent identity by BLAST analysis: Human, Chimpanzee, Baboon, Monkey (100%), Gibbon, Marmoset, Rabbit, Horse (92%), Galago, Dog, Pig (85%), Turkey (84%). Type of Immunogen: Synthetic peptide
Isotype:	IgG
Specificity:	Human MDFIC
Predicted Reactivity:	Percent identity by BLAST analysis: Human (100%) Rabbit, Horse (92%) Dog, Pig (85%).
Purification:	Immunoaffinity purified

Target Details

Target:	MDFIC
Alternative Name:	MDFIC / HIC (MDFIC Products)
Background:	Name/Gene ID: MDFIC Synonyms: MDFIC, HIC
Gene ID:	29969
NCBI Accession:	NP_951038
UniProt:	Q9P1T7

Application Details

Application Notes:	Approved: WB Usage: ELISA titer using peptide based assay: 1:1562500. Western Blot: Suggested dilution at 1 µg/mL in 5 % skim milk / PBS buffer, and HRP conjugated anti-Rabbit IgG should be diluted in 1:50000 - 100000 as second antibody.
Comment:	Target Species of Antibody: Human
Restrictions:	For Research Use only

Handling

Format:	Lyophilized
Reconstitution:	Distilled Water.
Concentration:	Lot specific
Buffer:	Lyophilized from PBS with 2 % sucrose
Handling Advice:	Avoid repeat freeze-thaw cycles.
Storage:	4 °C, -20 °C
Storage Comment:	Long term: -20°C, the use of 50% glycerol is recommended if storing aliquots in -20°C for long term use (up to 1 year) Short term (less than 1 week): 4°C. Avoid freeze-thaw cycles.

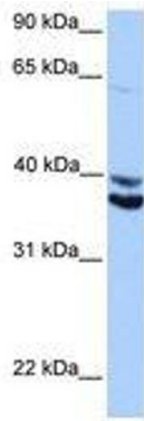


Image 1.