



[Go to Product page](#)

Datasheet for ABIN6739334
anti-GBX1 antibody (C-Term)

1 Image

Overview

Quantity:	100 µL
Target:	GBX1
Binding Specificity:	C-Term
Reactivity:	Human, Mouse, Rat, Dog, Cow, Guinea Pig, Horse, Rabbit, Zebrafish (Danio rerio), Drosophila melanogaster, Pig, Bat, Chicken, Monkey
Host:	Rabbit
Clonality:	Polyclonal
Conjugate:	This GBX1 antibody is un-conjugated
Application:	Western Blotting (WB)

Product Details

Immunogen:	Synthetic peptide from C-Terminus of human GBX1 (Q14549, NP_001092304). Percent identity by BLAST analysis: Human, Chimpanzee, Gorilla, Gibbon, Monkey, Galago, Marmoset, Mouse, Rat, Dog, Bovine, Bat, Rabbit, Horse, Pig, Opossum, Guinea pig, Chicken, Stickleback, Medaka, Zebrafish, Drosophila, Beetle (100%), Xenopus (92%), Orangutan, Elephant, Platypus, Lizard (85%). Type of Immunogen: Synthetic peptide
Isotype:	IgG
Specificity:	Human GBX1
Predicted Reactivity:	Percent identity by BLAST analysis: Human, Mouse, Chicken, Medaka, Pufferfish, Zebrafish,

Product Details

Drosophila, Beetle (100%) Xenopus, Mosquito (92%) Chimpanzee, Orangutan, Monkey, Dog, Bovine (85%).

Purification: Immunoaffinity purified

Target Details

Target: GBX1

Alternative Name: GBX1 ([GBX1 Products](#))

Background: Name/Gene ID: GBX1

Synonyms: GBX1, Gastrulation brain homeobox 1, Gastrulation brain homeo box 1, Homeobox protein GBX-1

Gene ID: 2636

NCBI Accession: [NP_001092304](#)

UniProt: [Q14549](#)

Application Details

Application Notes: Approved: WB

Usage: ELISA titer using peptide based assay: 1:1562500. Western Blot: Suggested dilution at 0.5 µg/mL in 5 % skim milk / PBS buffer, and HRP conjugated anti-Rabbit IgG should be diluted in 1:50000 - 100000 as second antibody.

Comment: Target Species of Antibody: Human

Restrictions: For Research Use only

Handling

Format: Lyophilized

Reconstitution: Distilled Water.

Concentration: Lot specific

Buffer: Lyophilized from PBS with 2 % sucrose

Handling Advice: Avoid repeat freeze-thaw cycles.

Handling

Storage: 4 °C, -20 °C

Storage Comment: Long term: -20°C, the use of 50% glycerol is recommended if storing aliquots in -20°C for long term use (up to 1 year)
Short term (less than 1 week): 4°C. Avoid freeze-thaw cycles.

Images

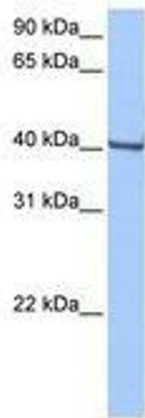


Image 1.