



Datasheet for ABIN6739343 **anti-DEPDC7 antibody (AA 100-149)**



[Go to Product page](#)

1 Image

Overview

Quantity:	100 µL
Target:	DEPDC7
Binding Specificity:	AA 100-149
Reactivity:	Human, Dog, Rabbit, Guinea Pig
Host:	Rabbit
Clonality:	Polyclonal
Conjugate:	This DEPDC7 antibody is un-conjugated
Application:	Western Blotting (WB)

Product Details

Immunogen:	Synthetic peptide located between aa100-149 of human DEPDC7 (Q96QD5, NP_631899). Percent identity by BLAST analysis: Human, Chimpanzee, Gorilla, Gibbon, Monkey, Elephant, Dog (100%), Marmoset, Rat, Bovine, Horse (92%), Mouse, Panda, Bat, Rabbit (85%). Type of Immunogen: Synthetic peptide
Isotype:	IgG
Specificity:	Human DEPDC7
Predicted Reactivity:	Percent identity by BLAST analysis: Human, Dog (100%) Horse, Bovine (92%) Rabbit (85%).
Purification:	Immunoaffinity purified

Target Details

Target:	DEPDC7
Alternative Name:	DEPDC7 (DEPDC7 Products)
Background:	Name/Gene ID: DEPDC7 Synonyms: DEPDC7, DEP domain containing 7, DJ85M6.4, Novel 58.3 KDA protein, TR2, Protein TR2/D15
Gene ID:	91614
NCBI Accession:	NP_631899
UniProt:	Q96QD5

Application Details

Application Notes:	Approved: WB Usage: ELISA titer using peptide based assay: 1:1562500. Western Blot: Suggested dilution at 1 µg/mL in 5 % skim milk / PBS buffer, and HRP conjugated anti-Rabbit IgG should be diluted in 1:50000 - 100000 as second antibody.
Comment:	Target Species of Antibody: Human
Restrictions:	For Research Use only

Handling

Format:	Lyophilized
Reconstitution:	Distilled Water.
Concentration:	Lot specific
Buffer:	Lyophilized from PBS with 2 % sucrose
Handling Advice:	Avoid repeat freeze-thaw cycles.
Storage:	4 °C,-20 °C
Storage Comment:	Long term: -20°C, the use of 50% glycerol is recommended if storing aliquots in -20°C for long term use (up to 1 year) Short term (less than 1 week): 4°C. Avoid freeze-thaw cycles.

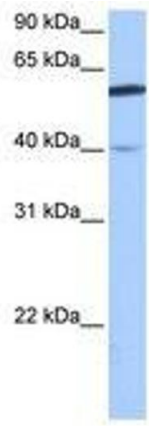


Image 1.