

Datasheet for ABIN6739347
anti-LIPJ antibody (AA 282-331)



[Go to Product page](#)

1 Image

Overview

Quantity:	100 µL
Target:	LIPJ
Binding Specificity:	AA 282-331
Reactivity:	Human
Host:	Rabbit
Clonality:	Polyclonal
Conjugate:	This LIPJ antibody is un-conjugated
Application:	Western Blotting (WB)

Product Details

Immunogen:	Synthetic peptide located between aa282-331 of human LIPJ (Q5W064, NP_001010939). Percent identity by BLAST analysis: Human (100%), Gorilla, Monkey, Marmoset, Horse (92%), Bovine (91%), Gibbon (85%), Galago, Elephant, Panda (84%). Type of Immunogen: Synthetic peptide
Isotype:	IgG
Specificity:	Human LIPJ
Predicted Reactivity:	Percent identity by BLAST analysis: Human (100%) Horse (92%) Bovine (91%).
Purification:	Immunoaffinity purified

Target Details

Target:	LIPJ
Alternative Name:	LIPJ (LIPJ Products)
Background:	Name/Gene ID: LIPJ Synonyms: LIPJ, Lipase, family member J, Lipase J, LIPL1, BA425M17.2, Lipase member J
Gene ID:	142910
NCBI Accession:	NP_001010939
UniProt:	Q5W064

Application Details

Application Notes:	Approved: WB Usage: ELISA titer using peptide based assay: 1:62500. Western Blot: Suggested dilution at 0.5 µg/mL in 5 % skim milk / PBS buffer, and HRP conjugated anti-Rabbit IgG should be diluted in 1:50000 - 100000 as second antibody.
Comment:	Target Species of Antibody: Human
Restrictions:	For Research Use only

Handling

Format:	Lyophilized
Reconstitution:	Distilled Water.
Concentration:	Lot specific
Buffer:	Lyophilized from PBS with 2 % sucrose
Handling Advice:	Avoid repeat freeze-thaw cycles.
Storage:	4 °C, -20 °C
Storage Comment:	Long term: -20°C, the use of 50% glycerol is recommended if storing aliquots in -20°C for long term use (up to 1 year) Short term (less than 1 week): 4°C. Avoid freeze-thaw cycles.

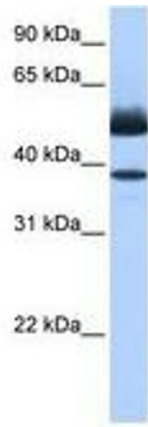


Image 1.