

Datasheet for ABIN6739352
anti-FAM54A antibody (AA 254-303)



[Go to Product page](#)

1 Image

Overview

Quantity:	100 µL
Target:	FAM54A
Binding Specificity:	AA 254-303
Reactivity:	Human, Cow, Rabbit, Monkey
Host:	Rabbit
Clonality:	Polyclonal
Conjugate:	This FAM54A antibody is un-conjugated
Application:	Western Blotting (WB)

Product Details

Immunogen:	Synthetic peptide located between aa254-303 of human MTFR2 (Q6P444, NP_001092756). Percent identity by BLAST analysis: Human, Chimpanzee, Gorilla, Gibbon, Monkey (100%), Marmoset, Elephant (85%), Bovine (84%), Rabbit (83%). Type of Immunogen: Synthetic peptide
Isotype:	IgG
Specificity:	Human FAM54A
Predicted Reactivity:	Percent identity by BLAST analysis: Human (100%) Bovine (84%) Rabbit (83%).
Purification:	Immunoaffinity purified

Target Details

Target:	FAM54A
Alternative Name:	FAM54A / DUFD1 (FAM54A Products)
Background:	Name/Gene ID: MTFR2 Synonyms: MTFR2, DUFD1, FAM54A
Gene ID:	113115
NCBI Accession:	NP_001092756
UniProt:	Q6P444

Application Details

Application Notes:	Approved: WB Usage: ELISA titer using peptide based assay: 1:12500. Western Blot: Suggested dilution at 1 μ g/mL in 5 % skim milk / PBS buffer, and HRP conjugated anti-Rabbit IgG should be diluted in 1:50000 - 100000 as second antibody.
Comment:	Target Species of Antibody: Human
Restrictions:	For Research Use only

Handling

Format:	Lyophilized
Reconstitution:	Distilled Water.
Concentration:	Lot specific
Buffer:	Lyophilized from PBS with 2 % sucrose
Handling Advice:	Avoid repeat freeze-thaw cycles.
Storage:	4 °C, -20 °C
Storage Comment:	Long term: -20°C, the use of 50% glycerol is recommended if storing aliquots in -20°C for long term use (up to 1 year) Short term (less than 1 week): 4°C. Avoid freeze-thaw cycles.

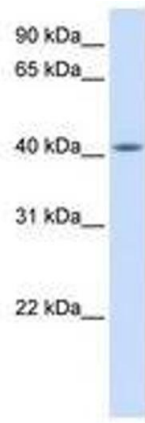


Image 1.