



[Go to Product page](#)

Datasheet for ABIN6739360  
**anti-ACTRT2 antibody (C-Term)**

1 Image

Overview

Quantity:	100 µL
Target:	ACTRT2
Binding Specificity:	C-Term
Reactivity:	Human, Mouse, Rat, Dog, Monkey
Host:	Rabbit
Clonality:	Polyclonal
Conjugate:	This ACTRT2 antibody is un-conjugated
Application:	Western Blotting (WB)

Product Details

Immunogen:	Synthetic peptide from C-Terminus of human ACTRT2 (Q8TDY3, NP_536356). Percent identity by BLAST analysis: Human, Chimpanzee, Gorilla, Monkey, Mouse, Rat, Dog (100%), Elephant, Panda, Bovine, Horse, Pig (92%), Galago (85%).  Type of Immunogen: Synthetic peptide
Isotype:	IgG
Specificity:	Human ACTRT2
Predicted Reactivity:	Percent identity by BLAST analysis: Mouse, Rat, Dog (100%).
Purification:	Immunoaffinity purified

## Target Details

---

Target:	ACTRT2
Alternative Name:	ACTRT2 ( <a href="#">ACTRT2 Products</a> )
Background:	Name/Gene ID: ACTRT2  Synonyms: ACTRT2, Actin-related protein T2, Actin-related protein M2, Arp-T2, Actin-related protein hArpM2, HARPM2, ARPM2, ARPT2
Gene ID:	140625
NCBI Accession:	<a href="#">NP_536356</a>
UniProt:	<a href="#">Q8TDY3</a>

## Application Details

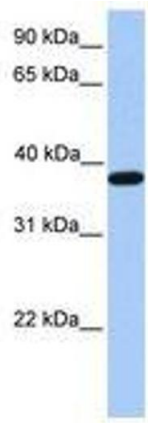
---

Application Notes:	Approved: WB  Usage: ELISA titer using peptide based assay: 1:1562500. Western Blot: Suggested dilution at 1 µg/mL in 5 % skim milk / PBS buffer, and HRP conjugated anti-Rabbit IgG should be diluted in 1:50000 - 100000 as second antibody.
Comment:	Target Species of Antibody: Human
Restrictions:	For Research Use only

## Handling

---

Format:	Lyophilized
Reconstitution:	Distilled Water.
Concentration:	Lot specific
Buffer:	Lyophilized from PBS with 2 % sucrose
Handling Advice:	Avoid repeat freeze-thaw cycles.
Storage:	4 °C,-20 °C
Storage Comment:	Long term: -20°C, the use of 50% glycerol is recommended if storing aliquots in -20°C for long term use (up to 1 year)  Short term (less than 1 week): 4°C. Avoid freeze-thaw cycles.



**Image 1.**