



[Go to Product page](#)

## Datasheet for ABIN6739361 anti-ERI2 antibody (AA 201-250)

### 1 Image

#### Overview

Quantity:	100 µL
Target:	ERI2 (EXOD1)
Binding Specificity:	AA 201-250
Reactivity:	Human, Mouse, Horse, Rabbit, Rat, Guinea Pig, Zebrafish (Danio rerio), Bat, Monkey, Xenopus laevis, Chicken
Host:	Rabbit
Clonality:	Polyclonal
Conjugate:	This ERI2 antibody is un-conjugated
Application:	Western Blotting (WB)

#### Product Details

Immunogen:	Synthetic peptide located between aa201-250 of human ERI2 (A8K979, NP_542394). Percent identity by BLAST analysis: Human, Gorilla, Gibbon, Monkey, Galago, Marmoset, Mouse, Rat, Elephant, Panda, Bat, Rabbit, Horse, Opossum, Guinea pig, Turkey, Zebra finch, Chicken, Xenopus, Stickleback (100%), Bovine, Pig, Platypus (92%), Salmon (91%), Zebrafish, Rice (84%).  Type of Immunogen: Synthetic peptide
Isotype:	IgG
Specificity:	Human ERI2 / EXOD1
Predicted Reactivity:	Percent identity by BLAST analysis: Human, Mouse, Rat, Rabbit, Horse, Guinea pig, Chicken, Xenopus (100%) Pig, Bovine (92%) Zebrafish (84%).

## Product Details

---

Purification: Immunoaffinity purified

## Target Details

---

Target: ERI2 (EXOD1)

Alternative Name: ERI2 / EXOD1 ([EXOD1 Products](#))

Background: Name/Gene ID: ERI2

Synonyms: ERI2, ERI1 exoribonuclease 2, Exoribonuclease 2, EXOD1, KIAA1504

Gene ID: 112479

NCBI Accession: [NP\\_542394](#)

UniProt: [A8K979](#)

## Application Details

---

Application Notes: Approved: WB

Usage: ELISA titer using peptide based assay: 1:312500. Western Blot: Suggested dilution at 1  $\mu$ g/mL in 5 % skim milk / PBS buffer, and HRP conjugated anti-Rabbit IgG should be diluted in 1:50000 - 100000 as second antibody.

Comment: Target Species of Antibody: Human

Restrictions: For Research Use only

## Handling

---

Format: Lyophilized

Reconstitution: Distilled Water.

Concentration: Lot specific

Buffer: Lyophilized from PBS with 2 % sucrose

Handling Advice: Avoid repeat freeze-thaw cycles.

Storage: 4 °C, -20 °C

Storage Comment: Long term: -20°C, the use of 50% glycerol is recommended if storing aliquots in -20°C for long term use (up to 1 year)

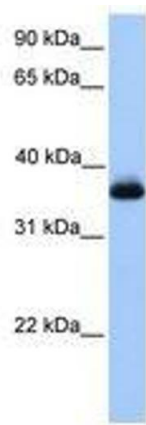
## Handling

---

Short term (less than 1 week): 4°C. Avoid freeze-thaw cycles.

## Images

---



**Image 1.**