



[Go to Product page](#)

Datasheet for ABIN6739362
anti-C20orf141 antibody (AA 91-140)

1 Image

Overview

Quantity:	100 µL
Target:	C20orf141
Binding Specificity:	AA 91-140
Reactivity:	Human, Mouse, Monkey
Host:	Rabbit
Clonality:	Polyclonal
Conjugate:	This C20orf141 antibody is un-conjugated
Application:	Western Blotting (WB)

Product Details

Immunogen:	Synthetic peptide located between aa91-140 of human C20orf141 (Q9NUB4, NP_542777). Percent identity by BLAST analysis: Human, Gorilla, Monkey, Marmoset, Mouse (100%), Bovine, Rabbit (92%). Type of Immunogen: Synthetic peptide
Isotype:	IgG
Specificity:	Human C20orf141
Predicted Reactivity:	Percent identity by BLAST analysis: Human, Rabbit (92%).
Purification:	Immunoaffinity purified

Target Details

Target:	C20orf141
Alternative Name:	C20orf141 (C20orf141 Products)
Background:	Name/Gene ID: C20orf141 Synonyms: C20orf141, DJ860F19.4
Gene ID:	128653
NCBI Accession:	NP_542777
UniProt:	Q9NUB4

Application Details

Application Notes:	Approved: WB Usage: ELISA titer using peptide based assay: 1:62500. Western Blot: Suggested dilution at 1 μ g/mL in 5 % skim milk / PBS buffer, and HRP conjugated anti-Rabbit IgG should be diluted in 1:50000 - 100000 as second antibody.
Comment:	Target Species of Antibody: Human
Restrictions:	For Research Use only

Handling

Format:	Lyophilized
Reconstitution:	Distilled Water.
Concentration:	Lot specific
Buffer:	Lyophilized from PBS with 2 % sucrose
Handling Advice:	Avoid repeat freeze-thaw cycles.
Storage:	4 °C, -20 °C
Storage Comment:	Long term: -20°C, the use of 50% glycerol is recommended if storing aliquots in -20°C for long term use (up to 1 year) Short term (less than 1 week): 4°C. Avoid freeze-thaw cycles.

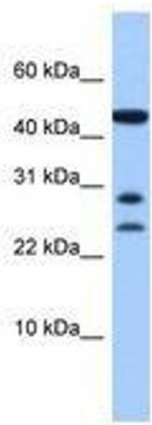


Image 1.