

Datasheet for ABIN6739372  
**anti-ARL11 antibody (AA 74-123)**[Go to Product page](#)

## 1 Image

## Overview

Quantity:	100 µL
Target:	ARL11
Binding Specificity:	AA 74-123
Reactivity:	Human, Rat, Mouse, Pig, Rabbit, Cow, Horse, Hamster, Monkey
Host:	Rabbit
Clonality:	Polyclonal
Conjugate:	This ARL11 antibody is un-conjugated
Application:	Western Blotting (WB)

## Product Details

Immunogen:	Synthetic peptide located between aa74-123 of human ARL11 (Q969Q4, NP_612459). Percent identity by BLAST analysis: Human, Chimpanzee, Gibbon, Monkey, Galago, Marmoset, Mouse, Rat, Hamster, Elephant, Bovine, Rabbit, Horse, Pig (100%), Gorilla, Bat, Opossum, Guinea pig (92%).  Type of Immunogen: Synthetic peptide
Isotype:	IgG
Specificity:	Human ARL11
Predicted Reactivity:	Percent identity by BLAST analysis: Human, Mouse, Rat, Rabbit, Pig, Bovine (100%) Guinea pig (92%).
Purification:	Immunoaffinity purified

## Target Details

Target:	ARL11
Alternative Name:	ARL11 ( <a href="#">ARL11 Products</a> )
Background:	Name/Gene ID: ARL11  Synonyms: ARL11, ARLTS1
Gene ID:	115761
NCBI Accession:	<a href="#">NP_612459</a>
UniProt:	<a href="#">Q969Q4</a>

## Application Details

Application Notes:	Approved: WB  Usage: ELISA titer using peptide based assay: 1:62500. Western Blot: Suggested dilution at 1 µg/mL in 5 % skim milk / PBS buffer, and HRP conjugated anti-Rabbit IgG should be diluted in 1:50000 - 100000 as second antibody.
Comment:	Target Species of Antibody: Human
Restrictions:	For Research Use only

## Handling

Format:	Lyophilized
Reconstitution:	Distilled Water.
Concentration:	Lot specific
Buffer:	Lyophilized from PBS with 2 % sucrose
Handling Advice:	Avoid repeat freeze-thaw cycles.
Storage:	4 °C, -20 °C
Storage Comment:	Long term: -20°C, the use of 50% glycerol is recommended if storing aliquots in -20°C for long term use (up to 1 year)  Short term (less than 1 week): 4°C. Avoid freeze-thaw cycles.

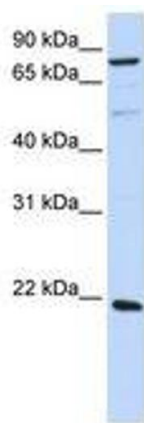


Image 1.