



[Go to Product page](#)

Datasheet for ABIN6739376
anti-LRRC28 antibody (AA 290-339)

1 Image

Overview

Quantity:	100 µL
Target:	LRRC28
Binding Specificity:	AA 290-339
Reactivity:	Human, Mouse, Guinea Pig, Horse, Monkey
Host:	Rabbit
Clonality:	Polyclonal
Conjugate:	This LRRC28 antibody is un-conjugated
Application:	Western Blotting (WB)

Product Details

Immunogen:	Synthetic peptide located between aa290-339 of human LRRC28 (Q86X40, NP_653199). Percent identity by BLAST analysis: Human, Chimpanzee, Gorilla, Orangutan, Gibbon, Monkey, Galago, Marmoset, Mouse, Horse, Guinea pig (100%), Rat, Elephant, Panda, Dog, Bat, Rabbit, Pig, Opossum, Platypus (92%), Bovine, Turkey, Zebra finch, Chicken (85%). Type of Immunogen: Synthetic peptide
Isotype:	IgG
Specificity:	Human LRRC28
Predicted Reactivity:	Percent identity by BLAST analysis: Human, Mouse (100%) Rat, Rabbit, Pig, Dog (92%) Chicken (85%).
Purification:	Immunoaffinity purified

Target Details

Target:	LRRRC28
Alternative Name:	LRRRC28 (LRRRC28 Products)
Background:	Name/Gene ID: LRRRC28 Synonyms: LRRRC28
Gene ID:	123355
NCBI Accession:	NP_653199
UniProt:	Q86X40

Application Details

Application Notes:	Approved: WB Usage: ELISA titer using peptide based assay: 1:62500. Western Blot: Suggested dilution at 1 μ g/mL in 5 % skim milk / PBS buffer, and HRP conjugated anti-Rabbit IgG should be diluted in 1:50000 - 100000 as second antibody.
Comment:	Target Species of Antibody: Human
Restrictions:	For Research Use only

Handling

Format:	Lyophilized
Reconstitution:	Distilled Water.
Concentration:	Lot specific
Buffer:	Lyophilized from PBS with 2 % sucrose
Handling Advice:	Avoid repeat freeze-thaw cycles.
Storage:	4 °C, -20 °C
Storage Comment:	Long term: -20°C, the use of 50% glycerol is recommended if storing aliquots in -20°C for long term use (up to 1 year) Short term (less than 1 week): 4°C. Avoid freeze-thaw cycles.

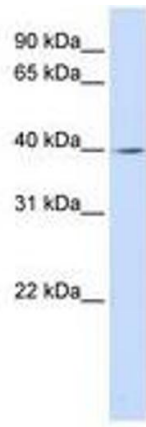


Image 1.