



## Datasheet for ABIN6739382 **anti-FBXO16 antibody (AA 74-123)**



[Go to Product page](#)

### 1 Image

#### Overview

Quantity:	100 µL
Target:	FBXO16
Binding Specificity:	AA 74-123
Reactivity:	Human, Mouse, Rat, Cow, Dog, Horse, Rabbit, Pig, Bat, Monkey
Host:	Rabbit
Clonality:	Polyclonal
Conjugate:	This FBXO16 antibody is un-conjugated
Application:	Western Blotting (WB)

#### Product Details

Immunogen:	Synthetic peptide located between aa74-123 of human FBXO16 (Q8IX29, NP_758954). Percent identity by BLAST analysis: Human, Chimpanzee, Gorilla, Monkey, Marmoset, Mouse, Rat, Panda, Dog, Bovine, Bat, Rabbit, Horse, Pig (100%), Elephant, Guinea pig (92%), Galago, Opossum (85%), Xenopus (83%).  Type of Immunogen: Synthetic peptide
Isotype:	IgG
Specificity:	Human FBXO16
Predicted Reactivity:	Percent identity by BLAST analysis: Human, Mouse, Rat, Rabbit, Horse, Dog, Bovine (100%) Guinea pig (92%).
Purification:	Immunoaffinity purified

## Target Details

---

Target: FBX016

Alternative Name: FBX016 ([FBX016 Products](#))

Background: Name/Gene ID: FBX016

Synonyms: FBX016, FBX16, F-box protein 16, F-box only protein 16

Gene ID: 157574

NCBI Accession: [NP\\_758954](#)

UniProt: [Q8IX29](#)

## Application Details

---

Application Notes: Approved: WB

Usage: ELISA titer using peptide based assay: 1:1562500. Western Blot: Suggested dilution at 1 µg/mL in 5 % skim milk / PBS buffer, and HRP conjugated anti-Rabbit IgG should be diluted in 1:50000 - 100000 as second antibody.

Comment: Target Species of Antibody: Human

Restrictions: For Research Use only

## Handling

---

Format: Lyophilized

Reconstitution: Distilled Water.

Concentration: Lot specific

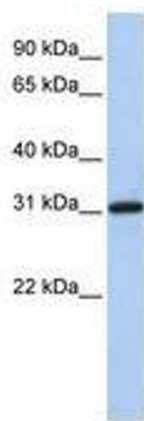
Buffer: Lyophilized from PBS with 2 % sucrose

Handling Advice: Avoid repeat freeze-thaw cycles.

Storage: 4 °C, -20 °C

Storage Comment: Long term: -20°C, the use of 50% glycerol is recommended if storing aliquots in -20°C for long term use (up to 1 year)

Short term (less than 1 week): 4°C. Avoid freeze-thaw cycles.



**Image 1.**