

Datasheet for ABIN6739385  
**anti-CCDC78 antibody (AA 127-165)**



[Go to Product page](#)

1 Image

## Overview

Quantity:	100 µL
Target:	CCDC78
Binding Specificity:	AA 127-165
Reactivity:	Human
Host:	Rabbit
Clonality:	Polyclonal
Conjugate:	This CCDC78 antibody is un-conjugated
Application:	Western Blotting (WB)

## Product Details

Immunogen:	Synthetic peptide located between aa127-165 of human CCDC78 (A2IDD5). Percent identity by BLAST analysis: Human (92%), Gorilla (85%).  Type of Immunogen: Synthetic peptide
Isotype:	IgG
Specificity:	Human CCDC78
Predicted Reactivity:	Percent identity by BLAST analysis: Human (91%).
Purification:	Immunoaffinity purified

## Target Details

Target:	CCDC78
---------	--------

## Target Details

---

Alternative Name:	<a href="#">CCDC78 (CCDC78 Products)</a>
Background:	Name/Gene ID: CCDC78  Synonyms: CCDC78, C16orf25, CNM4, JFP10, LA16c-444G9.2
Gene ID:	124093
UniProt:	<a href="#">A2IDD5</a>
Pathways:	<a href="#">Skeletal Muscle Fiber Development</a>

## Application Details

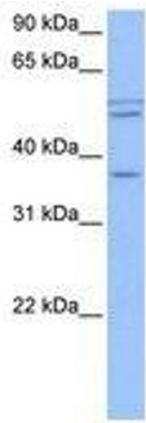
---

Application Notes:	Approved: WB  Usage: ELISA titer using peptide based assay: 1:312500. Western Blot: Suggested dilution at 1 $\mu$ g/mL in 5 % skim milk / PBS buffer, and HRP conjugated anti-Rabbit IgG should be diluted in 1:50000 - 100000 as second antibody.
Comment:	Target Species of Antibody: Human
Restrictions:	For Research Use only

## Handling

---

Format:	Lyophilized
Reconstitution:	Distilled Water.
Concentration:	Lot specific
Buffer:	Lyophilized from PBS with 2 % sucrose
Handling Advice:	Avoid repeat freeze-thaw cycles.
Storage:	4 °C,-20 °C
Storage Comment:	Long term: -20°C, the use of 50% glycerol is recommended if storing aliquots in -20°C for long term use (up to 1 year)  Short term (less than 1 week): 4°C. Avoid freeze-thaw cycles.



**Image 1.**