



Datasheet for ABIN6739386  
**anti-C19orf21 antibody (AA 565-614)**



[Go to Product page](#)

1 Image

Overview

Quantity:	100 µL
Target:	C19orf21 (MISP)
Binding Specificity:	AA 565-614
Reactivity:	Human, Rat, Mouse, Hamster, Monkey
Host:	Rabbit
Clonality:	Polyclonal
Conjugate:	This C19orf21 antibody is un-conjugated
Application:	Western Blotting (WB)

Product Details

Immunogen:	Synthetic peptide located between aa565-614 of human MISP (Q8IVT2, NP_775752). Percent identity by BLAST analysis: Human, Chimpanzee, Orangutan, Gibbon, Monkey, Marmoset, Mouse, Rat, Hamster, Elephant (100%), Galago, Bat (92%), Bovine, Guinea pig (91%).  Type of Immunogen: Synthetic peptide
Isotype:	IgG
Specificity:	Human C19orf21
Predicted Reactivity:	Percent identity by BLAST analysis: Guinea pig (91%).
Purification:	Immunoaffinity purified

## Target Details

---

Target:	C19orf21 (MISP)
Alternative Name:	MISP / C19orf21 ( <a href="#">MISP Products</a> )
Background:	Name/Gene ID: MISP  Synonyms: MISP, C19orf21
Gene ID:	126353
NCBI Accession:	<a href="#">NP_775752</a>
UniProt:	<a href="#">Q8IVT2</a>

## Application Details

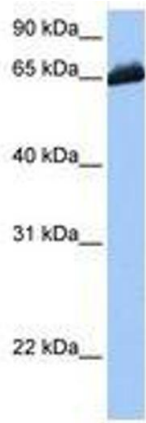
---

Application Notes:	Approved: WB  Usage: ELISA titer using peptide based assay: 1:62500. Western Blot: Suggested dilution at 1 $\mu$ g/mL in 5 % skim milk / PBS buffer, and HRP conjugated anti-Rabbit IgG should be diluted in 1:50000 - 100000 as second antibody.
Comment:	Target Species of Antibody: Human
Restrictions:	For Research Use only

## Handling

---

Format:	Lyophilized
Reconstitution:	Distilled Water.
Concentration:	Lot specific
Buffer:	Lyophilized from PBS with 2 % sucrose
Handling Advice:	Avoid repeat freeze-thaw cycles.
Storage:	4 °C, -20 °C
Storage Comment:	Long term: -20°C, the use of 50% glycerol is recommended if storing aliquots in -20°C for long term use (up to 1 year)  Short term (less than 1 week): 4°C. Avoid freeze-thaw cycles.



**Image 1.**