

Datasheet for ABIN6739393  
**anti-FUNDC1 antibody (AA 77-126)**



[Go to Product page](#)

1 Image

## Overview

Quantity:	100 µL
Target:	FUNDC1
Binding Specificity:	AA 77-126
Reactivity:	Human, Mouse, Rat, Cow, Dog, Guinea Pig, Horse, Zebrafish (Danio rerio), Rabbit, Monkey, Pig
Host:	Rabbit
Clonality:	Polyclonal
Conjugate:	This FUNDC1 antibody is un-conjugated
Application:	Western Blotting (WB)

## Product Details

Immunogen:	Synthetic peptide located between aa77-126 of human FUNDC1 (Q8IVP5, NP_776155). Percent identity by BLAST analysis: Human, Chimpanzee, Gorilla, Gibbon, Monkey, Marmoset, Mouse, Rat, Elephant, Panda, Dog, Bovine, Rabbit, Horse, Pig, Guinea pig, Platypus (100%), Galago, Bat, Opossum, Xenopus, Frog (92%), Turkey, Zebra finch, Chicken, Lizard (85%), Salmon, Sablefish (84%).  Type of Immunogen: Synthetic peptide
Isotype:	IgG
Specificity:	Human FUNDC1
Predicted Reactivity:	Percent identity by BLAST analysis: Mouse, Dog, Bovine (100%) Chicken (85%).
Purification:	Immunoaffinity purified

## Target Details

---

Target:	FUNDC1
Alternative Name:	FUNDC1 ( <a href="#">FUNDC1 Products</a> )
Background:	Name/Gene ID: FUNDC1  Synonyms: FUNDC1, FUN14 domain containing 1
Gene ID:	139341
NCBI Accession:	<a href="#">NP_776155</a>
UniProt:	<a href="#">Q8IVP5</a>

## Application Details

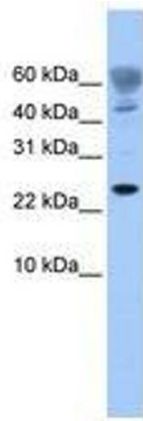
---

Application Notes:	Approved: WB  Usage: ELISA titer using peptide based assay: 1:312500. Western Blot: Suggested dilution at 1 $\mu$ g/mL in 5 % skim milk / PBS buffer, and HRP conjugated anti-Rabbit IgG should be diluted in 1:50000 - 100000 as second antibody.
Comment:	Target Species of Antibody: Human
Restrictions:	For Research Use only

## Handling

---

Format:	Lyophilized
Reconstitution:	Distilled Water.
Concentration:	Lot specific
Buffer:	Lyophilized from PBS with 2 % sucrose
Handling Advice:	Avoid repeat freeze-thaw cycles.
Storage:	4 °C, -20 °C
Storage Comment:	Long term: -20°C, the use of 50% glycerol is recommended if storing aliquots in -20°C for long term use (up to 1 year)  Short term (less than 1 week): 4°C. Avoid freeze-thaw cycles.



**Image 1.**