

Datasheet for ABIN6739394
anti-ZCCHC12 antibody (AA 94-143)



[Go to Product page](#)

1 Image

Overview

Quantity:	100 µL
Target:	ZCCHC12
Binding Specificity:	AA 94-143
Reactivity:	Human, Rabbit, Pig
Host:	Rabbit
Clonality:	Polyclonal
Conjugate:	This ZCCHC12 antibody is un-conjugated
Application:	Western Blotting (WB)

Product Details

Immunogen:	Synthetic peptide located between aa94-143 of human ZCCHC12 (Q6PEW1, NP_776159). Percent identity by BLAST analysis: Human, Chimpanzee, Gorilla, Gibbon, Monkey, Rabbit, Pig (100%), Marmoset, Mouse, Rat, Panda, Dog, Bovine, Horse, Guinea pig (92%). Type of Immunogen: Synthetic peptide
Isotype:	IgG
Specificity:	Human ZCCHC12
Predicted Reactivity:	Percent identity by BLAST analysis: Mouse, Horse, Dog, Guinea pig (92%).
Purification:	Immunoaffinity purified

Target Details

Target:	ZCCHC12
Alternative Name:	ZCCHC12 (ZCCHC12 Products)
Background:	Name/Gene ID: ZCCHC12 Family: Zinc Finger Synonyms: ZCCHC12, PNMA7A, SIZN1, SIZN
Gene ID:	170261
NCBI Accession:	NP_776159
UniProt:	Q6PEW1

Application Details

Application Notes:	Approved: WB Usage: ELISA titer using peptide based assay: 1:1562500. Western Blot: Suggested dilution at 1 µg/mL in 5 % skim milk / PBS buffer, and HRP conjugated anti-Rabbit IgG should be diluted in 1:50000 - 100000 as second antibody.
Comment:	Target Species of Antibody: Human
Restrictions:	For Research Use only

Handling

Format:	Lyophilized
Reconstitution:	Distilled Water.
Concentration:	Lot specific
Buffer:	Lyophilized from PBS with 2 % sucrose
Handling Advice:	Avoid repeat freeze-thaw cycles.
Storage:	4 °C,-20 °C
Storage Comment:	Long term: -20°C, the use of 50% glycerol is recommended if storing aliquots in -20°C for long term use (up to 1 year) Short term (less than 1 week): 4°C. Avoid freeze-thaw cycles.

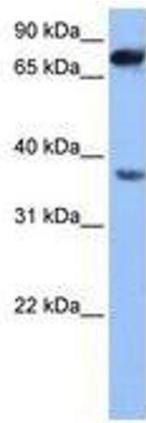


Image 1.