



[Go to Product page](#)

Datasheet for ABIN6739401  
**anti-KLC3 antibody (AA 251-300)**

1 Image

Overview

Quantity:	100 µL
Target:	KLC3
Binding Specificity:	AA 251-300
Reactivity:	Human, Mouse, Rat, Dog, Guinea Pig, Cow, Monkey, Bat
Host:	Rabbit
Clonality:	Polyclonal
Conjugate:	This KLC3 antibody is un-conjugated
Application:	Western Blotting (WB)

Product Details

Immunogen:	Synthetic peptide located between aa251-300 of human KLC3 (Q6P597, NP_803136). Percent identity by BLAST analysis: Human, Chimpanzee, Gorilla, Orangutan, Gibbon, Monkey, Galago, Marmoset, Mouse, Rat, Dog, Bovine, Bat, Guinea pig (100%).  Type of Immunogen: Synthetic peptide
Isotype:	IgG
Specificity:	Human KLC3
Predicted Reactivity:	Percent identity by BLAST analysis: Human, Mouse, Rat, Dog, Bovine, Guinea pig (100%).
Purification:	Immunoaffinity purified

## Target Details

---

Target:	KLC3
Alternative Name:	KLC3 ( <a href="#">KLC3 Products</a> )
Background:	Name/Gene ID: KLC3  Synonyms: KLC3, Kinesin light chain 3, KLC2-like, KLC2L, Kinesin light chain 2, KLCt, KNS2B
Gene ID:	147700
NCBI Accession:	<a href="#">NP_803136</a>
UniProt:	<a href="#">Q6P597</a>

## Application Details

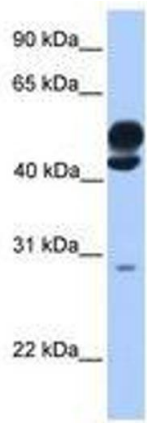
---

Application Notes:	Approved: WB  Usage: ELISA titer using peptide based assay: 1:1562500. Western Blot: Suggested dilution at 1 µg/mL in 5 % skim milk / PBS buffer, and HRP conjugated anti-Rabbit IgG should be diluted in 1:50000 - 100000 as second antibody.
Comment:	Target Species of Antibody: Human
Restrictions:	For Research Use only

## Handling

---

Format:	Lyophilized
Reconstitution:	Distilled Water.
Concentration:	Lot specific
Buffer:	Lyophilized from PBS with 2 % sucrose
Handling Advice:	Avoid repeat freeze-thaw cycles.
Storage:	4 °C, -20 °C
Storage Comment:	Long term: -20°C, the use of 50% glycerol is recommended if storing aliquots in -20°C for long term use (up to 1 year)  Short term (less than 1 week): 4°C. Avoid freeze-thaw cycles.



**Image 1.**