



Datasheet for ABIN6739407
anti-MORN4 antibody (C-Term)



[Go to Product page](#)

1 Image

Overview

Quantity:	100 µL
Target:	MORN4
Binding Specificity:	C-Term
Reactivity:	Human, Mouse, Dog, Rabbit, Cow, Guinea Pig, Zebrafish (Danio rerio), Bat, Monkey, Pig
Host:	Rabbit
Clonality:	Polyclonal
Conjugate:	This MORN4 antibody is un-conjugated
Application:	Western Blotting (WB)

Product Details

Immunogen:	Synthetic peptide from C-Terminus of human MORN4 (Q8NDC4, NP_849154). Percent identity by BLAST analysis: Human, Chimpanzee, Gorilla, Orangutan, Gibbon, Monkey, Galago, Marmoset, Mouse, Elephant, Panda, Dog, Bovine, Bat, Rabbit, Pig, Guinea pig (100%), Rat, Horse, Opossum, Lizard (92%), Turkey, Zebra finch, Chicken, Zebrafish (85%). Type of Immunogen: Synthetic peptide
Isotype:	IgG
Specificity:	Human MORN4
Predicted Reactivity:	Percent identity by BLAST analysis: Human, Orangutan, Mouse, Dog, Bovine (100%) Rat (92%) Chicken, Zebrafish (85%).
Purification:	Immunoaffinity purified

Target Details

Target:	MORN4
Alternative Name:	MORN4 (MORN4 Products)
Background:	Name/Gene ID: MORN4 Synonyms: MORN4, 44050 protein, C10orf83, BA548K23.4, Protein 44050, RP11-548K23.4, Retinophilin, MORN repeat containing 4
Gene ID:	118812
NCBI Accession:	NP_849154
UniProt:	Q8NDC4

Application Details

Application Notes:	Approved: WB Usage: ELISA titer using peptide based assay: 1:312500. Western Blot: Suggested dilution at 1 μ g/mL in 5 % skim milk / PBS buffer, and HRP conjugated anti-Rabbit IgG should be diluted in 1:50000 - 100000 as second antibody.
Comment:	Target Species of Antibody: Human
Restrictions:	For Research Use only

Handling

Format:	Lyophilized
Reconstitution:	Distilled Water.
Concentration:	Lot specific
Buffer:	Lyophilized from PBS with 2 % sucrose
Handling Advice:	Avoid repeat freeze-thaw cycles.
Storage:	4 °C,-20 °C
Storage Comment:	Long term: -20°C, the use of 50% glycerol is recommended if storing aliquots in -20°C for long term use (up to 1 year) Short term (less than 1 week): 4°C. Avoid freeze-thaw cycles.

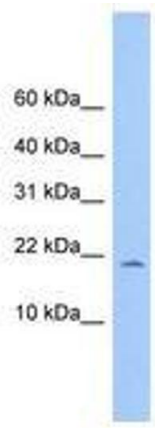


Image 1.