



[Go to Product page](#)

Datasheet for ABIN6739410  
**anti-CMTM8 antibody (C-Term)**

1 Image

Overview

Quantity:	100 µL
Target:	CMTM8
Binding Specificity:	C-Term
Reactivity:	Human, Rat, Cow, Rabbit, Dog, Guinea Pig, Horse, Monkey
Host:	Rabbit
Clonality:	Polyclonal
Conjugate:	This CMTM8 antibody is un-conjugated
Application:	Western Blotting (WB)

Product Details

Immunogen:	Synthetic peptide from C-Terminus of human CMTM8 (Q8IZV2, NP_849199). Percent identity by BLAST analysis: Human, Chimpanzee, Gorilla, Gibbon, Monkey, Galago, Marmoset, Elephant, Dog, Bovine, Rabbit, Guinea pig (100%), Bat (92%), Horse (85%), Mouse, Rat (78%).  Type of Immunogen: Synthetic peptide
Isotype:	IgG
Specificity:	Human CMTM8 / CKLFSF8
Predicted Reactivity:	Percent identity by BLAST analysis: Human, Dog (100%) Horse (85%).
Purification:	Immunoaffinity purified

## Target Details

---

Target:	CMTM8
Alternative Name:	CMTM8 ( <a href="#">CMTM8 Products</a> )
Background:	Name/Gene ID: CMTM8  Synonyms: CMTM8, CKLFSF8, CKLFSF8-V2
Gene ID:	152189
NCBI Accession:	<a href="#">NP_849199</a>
UniProt:	<a href="#">Q8IZV2</a>

## Application Details

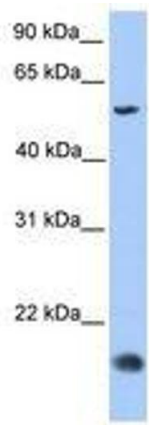
---

Application Notes:	Approved: WB  Usage: ELISA titer using peptide based assay: 1:1562500. Western Blot: Suggested dilution at 1 µg/mL in 5 % skim milk / PBS buffer, and HRP conjugated anti-Rabbit IgG should be diluted in 1:50000 - 100000 as second antibody.
Comment:	Target Species of Antibody: Human
Restrictions:	For Research Use only

## Handling

---

Format:	Lyophilized
Reconstitution:	Distilled Water.
Concentration:	Lot specific
Buffer:	Lyophilized from PBS with 2 % sucrose
Handling Advice:	Avoid repeat freeze-thaw cycles.
Storage:	4 °C, -20 °C
Storage Comment:	Long term: -20°C, the use of 50% glycerol is recommended if storing aliquots in -20°C for long term use (up to 1 year)  Short term (less than 1 week): 4°C. Avoid freeze-thaw cycles.



**Image 1.**