



[Go to Product page](#)

Datasheet for ABIN6739414
anti-FAM101A antibody (C-Term)

1 Image

Overview

Quantity:	100 µL
Target:	FAM101A
Binding Specificity:	C-Term
Reactivity:	Human, Rat, Pig, Zebrafish (Danio rerio), Dog, Guinea Pig, Horse, Monkey
Host:	Rabbit
Clonality:	Polyclonal
Conjugate:	This FAM101A antibody is un-conjugated
Application:	Western Blotting (WB)

Product Details

Immunogen:	Synthetic peptide from C-Terminus of human FAM101A (Q6ZTI6). Percent identity by BLAST analysis: Human, Chimpanzee, Gibbon, Monkey, Marmoset, Dog (100%), Gorilla, Galago, Elephant (92%), Mouse, Rat, Pig (85%), Horse, Guinea pig (84%). Type of Immunogen: Synthetic peptide
Isotype:	IgG
Specificity:	Human FAM101A
Predicted Reactivity:	Percent identity by BLAST analysis: Dog (100%) Rat, Pig (85%) Horse, Guinea pig (84%).
Purification:	Immunoaffinity purified

Target Details

Target:	FAM101A
Alternative Name:	FAM101A (FAM101A Products)
Background:	Name/Gene ID: FAM101A Synonyms: FAM101A, Protein FAM101A
Gene ID:	144347
UniProt:	Q6ZT16

Application Details

Application Notes:	Approved: WB Usage: ELISA titer using peptide based assay: 1:312500. Western Blot: Suggested dilution at 1 μ g/mL in 5 % skim milk / PBS buffer, and HRP conjugated anti-Rabbit IgG should be diluted in 1:50000 - 100000 as second antibody.
Comment:	Target Species of Antibody: Human
Restrictions:	For Research Use only

Handling

Format:	Lyophilized
Reconstitution:	Distilled Water.
Concentration:	Lot specific
Buffer:	Lyophilized from PBS with 2 % sucrose
Handling Advice:	Avoid repeat freeze-thaw cycles.
Storage:	4 °C,-20 °C
Storage Comment:	Long term: -20°C, the use of 50% glycerol is recommended if storing aliquots in -20°C for long term use (up to 1 year) Short term (less than 1 week): 4°C. Avoid freeze-thaw cycles.

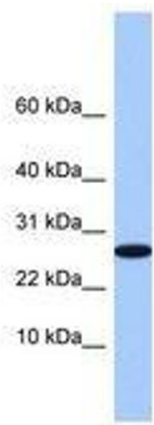


Image 1.