



[Go to Product page](#)

Datasheet for ABIN6739437  
**anti-C12ORF68 antibody (AA 51-100)**

1 Image

Overview

Quantity:	100 µL
Target:	C12ORF68 (C12orf68)
Binding Specificity:	AA 51-100
Reactivity:	Human, Mouse, Rat, Cow
Host:	Rabbit
Clonality:	Polyclonal
Conjugate:	This C12ORF68 antibody is un-conjugated
Application:	Western Blotting (WB)

Product Details

Immunogen:	Synthetic peptide located between aa51-100 of human C12orf68 (Q52MB2, NP_001013657). Percent identity by BLAST analysis: Human, Chimpanzee, Mouse, Rat, Bovine (100%), Gibbon, Monkey, Galago, Hamster, Panda, Dog, Bat, Rabbit, Horse, Opossum, Guinea pig (92%).  Type of Immunogen: Synthetic peptide
Isotype:	IgG
Specificity:	Human C12orf68
Predicted Reactivity:	Percent identity by BLAST analysis: Rabbit (92%).
Purification:	Immunoaffinity purified

## Target Details

---

Target: C12ORF68 (C12orf68)

Alternative Name: CCDC184 ([C12orf68 Products](#))

Background: Name/Gene ID: CCDC184

Synonyms: CCDC184, C12orf68, LOC387856

Gene ID: 387856

NCBI Accession: [NP\\_001013657](#)

UniProt: [Q52MB2](#)

## Application Details

---

Application Notes: Approved: WB

Usage: ELISA titer using peptide based assay: 1:1562500. Western Blot: Suggested dilution at 1 µg/mL in 5 % skim milk / PBS buffer, and HRP conjugated anti-Rabbit IgG should be diluted in 1:50000 - 100000 as second antibody.

Comment: Target Species of Antibody: Human

Restrictions: For Research Use only

## Handling

---

Format: Lyophilized

Reconstitution: Distilled Water.

Concentration: Lot specific

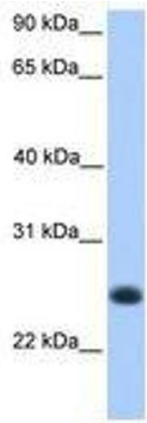
Buffer: Lyophilized from PBS with 2 % sucrose

Handling Advice: Avoid repeat freeze-thaw cycles.

Storage: 4 °C, -20 °C

Storage Comment: Long term: -20°C, the use of 50% glycerol is recommended if storing aliquots in -20°C for long term use (up to 1 year)

Short term (less than 1 week): 4°C. Avoid freeze-thaw cycles.



**Image 1.**