



[Go to Product page](#)

Datasheet for ABIN6739444

anti-TMEM184A antibody (AA 326-375)

1 Image

Overview

Quantity:	100 µL
Target:	TMEM184A
Binding Specificity:	AA 326-375
Reactivity:	Human, Guinea Pig, Horse, Pig
Host:	Rabbit
Clonality:	Polyclonal
Conjugate:	This TMEM184A antibody is un-conjugated
Application:	Western Blotting (WB)

Product Details

Immunogen:	Synthetic peptide located between aa326-375 of human TMEM184A (Q6ZMB5, NP_001091089). Percent identity by BLAST analysis: Human (100%), Gorilla, Monkey, Panda, Dog (92%), Marmoset, Rat, Guinea pig (85%). Type of Immunogen: Synthetic peptide
Isotype:	IgG
Specificity:	Human TMEM184A
Predicted Reactivity:	Percent identity by BLAST analysis: Dog (92%) Guinea pig (85%).
Purification:	Immunoaffinity purified

Target Details

Target:	TMEM184A
Alternative Name:	TMEM184A (TMEM184A Products)
Background:	Name/Gene ID: TMEM184A Synonyms: TMEM184A, Transmembrane protein 184A
Gene ID:	202915
NCBI Accession:	NP_001091089
UniProt:	Q6ZMB5

Application Details

Application Notes:	Approved: WB Usage: ELISA titer using peptide based assay: 1:1562500. Western Blot: Suggested dilution at 1 µg/mL in 5 % skim milk / PBS buffer, and HRP conjugated anti-Rabbit IgG should be diluted in 1:50000 - 100000 as second antibody.
Comment:	Target Species of Antibody: Human
Restrictions:	For Research Use only

Handling

Format:	Lyophilized
Reconstitution:	Distilled Water.
Concentration:	Lot specific
Buffer:	Lyophilized from PBS with 2 % sucrose
Handling Advice:	Avoid repeat freeze-thaw cycles.
Storage:	4 °C, -20 °C
Storage Comment:	Long term: -20°C, the use of 50% glycerol is recommended if storing aliquots in -20°C for long term use (up to 1 year) Short term (less than 1 week): 4°C. Avoid freeze-thaw cycles.

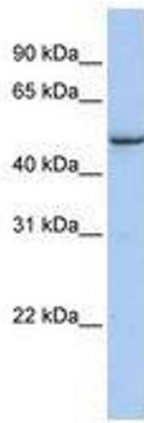


Image 1.