



[Go to Product page](#)

Datasheet for ABIN6739447

## anti-C12orf42 antibody (AA 110-159)

### 1 Image

#### Overview

Quantity:	100 µL
Target:	C12orf42
Binding Specificity:	AA 110-159
Reactivity:	Human
Host:	Rabbit
Clonality:	Polyclonal
Conjugate:	This C12orf42 antibody is un-conjugated
Application:	Western Blotting (WB)

#### Product Details

Immunogen:	Synthetic peptide located between aa110-159 of human C12orf42 (Q96LP6, NP_001092806). Percent identity by BLAST analysis: Human (100%), Gorilla (92%), Gibbon (85%).  Type of Immunogen: Synthetic peptide
Isotype:	IgG
Specificity:	Human C12orf42
Predicted Reactivity:	Percent identity by BLAST analysis: Human (100%).
Purification:	Immunoaffinity purified

#### Target Details

Target:	C12orf42
---------	----------

## Target Details

---

Alternative Name: C12orf42 ([C12orf42 Products](#))

Background: Name/Gene ID: C12orf42

Synonyms: C12orf42

Gene ID: 374470

NCBI Accession: [NP\\_001092806](#)

UniProt: [Q96LP6](#)

## Application Details

---

Application Notes: Approved: WB

Usage: ELISA titer using peptide based assay: 1:1562500. Western Blot: Suggested dilution at 1 µg/mL in 5 % skim milk / PBS buffer, and HRP conjugated anti-Rabbit IgG should be diluted in 1:50000 - 100000 as second antibody.

Comment: Target Species of Antibody: Human

Restrictions: For Research Use only

## Handling

---

Format: Lyophilized

Reconstitution: Distilled Water.

Concentration: Lot specific

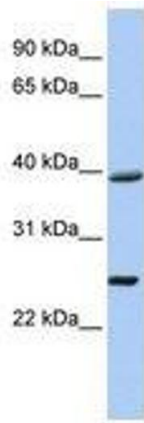
Buffer: Lyophilized from PBS with 2 % sucrose

Handling Advice: Avoid repeat freeze-thaw cycles.

Storage: 4 °C, -20 °C

Storage Comment: Long term: -20°C, the use of 50% glycerol is recommended if storing aliquots in -20°C for long term use (up to 1 year)

Short term (less than 1 week): 4°C. Avoid freeze-thaw cycles.



**Image 1.**