



[Go to Product page](#)

Datasheet for ABIN6739451  
**anti-ZNF675 antibody (AA 146-195)**

1 Image

Overview

Quantity:	100 µL
Target:	ZNF675
Binding Specificity:	AA 146-195
Reactivity:	Human
Host:	Rabbit
Clonality:	Polyclonal
Conjugate:	This ZNF675 antibody is un-conjugated
Application:	Western Blotting (WB)

Product Details

Immunogen:	Synthetic peptide located between aa146-195 of human ZNF675 (Q8TD23, NP_612203). Percent identity by BLAST analysis: Human, Gorilla (100%), Gibbon, Monkey (92%).  Type of Immunogen: Synthetic peptide
Isotype:	IgG
Specificity:	Human ZNF675
Predicted Reactivity:	Percent identity by BLAST analysis: Human (100%).
Purification:	Immunoaffinity purified

Target Details

Target:	ZNF675
---------	--------

## Target Details

---

Alternative Name: ZNF675 ([ZNF675 Products](#))

Background: Name/Gene ID: ZNF675  
Family: Zinc Finger

Synonyms: ZNF675, TBZF, TIZ, TRAF6 inhibitory zinc finger, Zinc finger protein 675

Gene ID: 171392

NCBI Accession: [NP\\_612203](#)

UniProt: [Q8TD23](#)

## Application Details

---

Application Notes: Approved: WB

Usage: ELISA titer using peptide based assay: 1:62500. Western Blot: Suggested dilution at 1  $\mu$ g/mL in 5 % skim milk / PBS buffer, and HRP conjugated anti-Rabbit IgG should be diluted in 1:50000 - 100000 as second antibody.

Comment: Target Species of Antibody: Human

Restrictions: For Research Use only

## Handling

---

Format: Lyophilized

Reconstitution: Distilled Water.

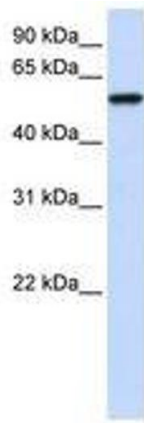
Concentration: Lot specific

Buffer: Lyophilized from PBS with 2 % sucrose

Handling Advice: Avoid repeat freeze-thaw cycles.

Storage: 4 °C, -20 °C

Storage Comment: Long term: -20°C, the use of 50% glycerol is recommended if storing aliquots in -20°C for long term use (up to 1 year)  
Short term (less than 1 week): 4°C. Avoid freeze-thaw cycles.



**Image 1.**