



[Go to Product page](#)

Datasheet for ABIN6739458
anti-ICEF1 antibody (AA 254-303)

1 Image

Overview

Quantity:	100 µL
Target:	ICEF1 (IPCEF1)
Binding Specificity:	AA 254-303
Reactivity:	Human, Monkey
Host:	Rabbit
Clonality:	Polyclonal
Conjugate:	This ICEF1 antibody is un-conjugated
Application:	Western Blotting (WB)

Product Details

Immunogen:	Synthetic peptide located between aa254-303 of human IPCEF1 (Q8WWN9, NP_056368). Percent identity by BLAST analysis: Human, Gorilla, Gibbon, Monkey, Marmoset (100%), Bovine, Rabbit, Horse (92%), Guinea pig (85%), Mouse (78%). Type of Immunogen: Synthetic peptide
Isotype:	IgG
Specificity:	Human IPCEF1 / PIP3-E
Predicted Reactivity:	Percent identity by BLAST analysis:
Purification:	Immunoaffinity purified

Target Details

Target:	ICEF1 (IPCEF1)
Alternative Name:	IPCEF1 / PIP3E (IPCEF1 Products)
Background:	Name/Gene ID: IPCEF1 Synonyms: IPCEF1, PIP3-E, RP3-402L9.2, KIAA0403
Gene ID:	26034
NCBI Accession:	NP_056368
UniProt:	Q8WWN9

Application Details

Application Notes:	Approved: WB Usage: ELISA titer using peptide based assay: 1:62500. Western Blot: Suggested dilution at 1 μ g/mL in 5 % skim milk / PBS buffer, and HRP conjugated anti-Rabbit IgG should be diluted in 1:50000 - 100000 as second antibody.
Comment:	Target Species of Antibody: Human
Restrictions:	For Research Use only

Handling

Format:	Lyophilized
Reconstitution:	Distilled Water.
Concentration:	Lot specific
Buffer:	Lyophilized from PBS with 2 % sucrose
Handling Advice:	Avoid repeat freeze-thaw cycles.
Storage:	4 °C, -20 °C
Storage Comment:	Long term: -20°C, the use of 50% glycerol is recommended if storing aliquots in -20°C for long term use (up to 1 year) Short term (less than 1 week): 4°C. Avoid freeze-thaw cycles.

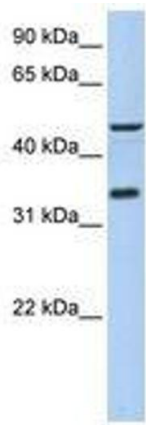


Image 1.