



[Go to Product page](#)

Datasheet for ABIN6739463
anti-PRRC2B antibody (AA 101-150)

1 Image

Overview

Quantity:	100 µL
Target:	PRRC2B
Binding Specificity:	AA 101-150
Reactivity:	Human, Mouse, Cow, Dog, Guinea Pig, Horse, Monkey
Host:	Rabbit
Clonality:	Polyclonal
Conjugate:	This PRRC2B antibody is un-conjugated
Application:	Western Blotting (WB)

Product Details

Immunogen:	Synthetic peptide located between aa101-150 of human PRRC2B. Percent identity by BLAST analysis: Human, Gorilla, Gibbon, Monkey, Marmoset, Mouse, Elephant, Bovine, Horse, Guinea pig, Platypus (100%), Rat, Rabbit, Opossum (92%), Dog, Turkey, Chicken (85%), Bat (84%). Type of Immunogen: Synthetic peptide
Isotype:	IgG
Specificity:	Human PRRC2B / KIAA0515
Predicted Reactivity:	Percent identity by BLAST analysis: Mouse, Bovine (100%) Dog, Chicken (85%).
Purification:	Immunoaffinity purified

Target Details

Target:	PRRC2B
Alternative Name:	PRRC2B / BAT2L (PRRC2B Products)
Background:	Name/Gene ID: PRRC2B Synonyms: PRRC2B, BAT2L, BAT2L1, KIAA0515, Proline-rich coiled-coil 2B, Protein BAT2-like 1, Protein PRRC2B, RP11-334J6.1, LQFBS-1
Pathways:	SARS-CoV-2 Protein Interactome

Application Details

Application Notes:	Approved: WB Usage: ELISA titer using peptide based assay: 1:312500. Western Blot: Suggested dilution at 0.25 µg/mL in 5 % skim milk / PBS buffer, and HRP conjugated anti-Rabbit IgG should be diluted in 1:50000 - 100000 as second antibody.
Comment:	Target Species of Antibody: Human
Restrictions:	For Research Use only

Handling

Format:	Lyophilized
Reconstitution:	Distilled Water.
Concentration:	Lot specific
Buffer:	Lyophilized from PBS with 2 % sucrose
Handling Advice:	Avoid repeat freeze-thaw cycles.
Storage:	4 °C,-20 °C
Storage Comment:	Long term: -20°C, the use of 50% glycerol is recommended if storing aliquots in -20°C for long term use (up to 1 year) Short term (less than 1 week): 4°C. Avoid freeze-thaw cycles.

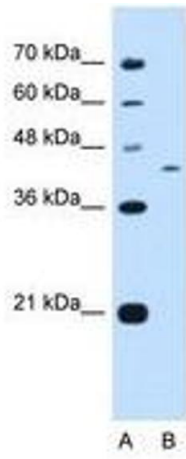


Image 1.